

Making Tracks



- In This Issue:**
- Commissioners Corner
 - Facelift Campaign
 - Leadership Wayne
 - Legislative Updates
 - Members in the Spotlight
 - New Energy Program
 - Save the Dates
 - Workforce Wayne
- Welcome New Members**
- 1st Stop Car Shop
 - Chorba Consulting, Inc.
 - First Presbyterian Church
 - Friedman Electric
 - Hotel Wayne
 - Illusions
 - Panera Bread
 - The Hanson Gallery & Decorum
 - Voluntary Action Center
 - Wheeler Hill Developing, Inc.
 - Willow River Gallery
- Contact Us:**
- Donna LaBar
 - exec@waynecountycc.com
 - Debbie Gillette
 - info@waynecountycc.com
 - Brandie White
 - membership@waynecountycc.com
 - Susan Edsall
 - bookkeeper@waynecountycc.com
 - Annetta DeYoung
 - train@waynecountycc.com

32 Commercial Street ~ Honesdale, PA 18431
(570) 253-1960



Legislative Updates - Rep. Michael Peifer

Governor Edward Rendell signed Act 4 of 2009 into law on June 10, 2009. This law expands health insurance coverage for children of insured parents. It allows adults up to age 30, under certain conditions, to remain covered by their parents' health insurance.

Those eligible children are unmarried, have no dependents, are residents of the commonwealth or enrolled as a full-time student at an institution of higher education, and are not provided private insurance coverage or enrolled in or eligible for government

benefits.

The coverage expansion occurs at the discretion of the employer and does not preclude an increase in premiums related to covering children for these additional years.

It applies to new health contracts and renewals occurring 180 days (six months) after June 10, 2009, and then on a rolling basis as contracts are made or renewed.

So, for example, since the bill was signed in June of 2009, if a policy is issued or renewed in January 2010, the provision will kick in with that January 2010 issuance or renewal.

Policies that are issued or renewed

less than six months after signing will wait until next year. For example, if a policy is issued or renewed in July 2009, the provision will not kick in until the renewal of that policy in July 2010.

This timing provision gives insurers time to revise their policies to be consistent with this new requirement.

Prior to this law, insurers were only required to cover children on their parents' insurance until the age of 19, if the employer offered dependent coverage. At the current time, almost 40 percent of those who are uninsured in Pennsylvania are between the ages of 19 to 29.

For more information, please call my office at (570) 253-5533.

Workforce Wayne

More and more community members are now seeking information regarding career exploration, distance learning and job training options. Workforce Wayne is working to fulfill the community's needs by implementing Community Career & Training Sites. By the fall, you will see seven Workforce Wayne Community Career & Training Sites popping up throughout the county. The first three sites will be opening within the next few weeks at the Honesdale, Hawley, and Lake/Salem Library locations. The sites to follow include Lakewood, Bethany, Newfoundland, and Pleasant Mount. Workforce Wayne is also exploring options for a Damascus area location, since it is not currently served by a library.

At these sites, you'll find new computers, new electronic and print resources, and a new, easy-to-find centralized location for all of the books that the libraries offer on careers, vocational testing, resumes, cover letters, and occupational

guidance. There will also be a workforce support person available at a scheduled date and time at each library to provide one-on-one assistance for those who need it.

One of the new resources that will be available at each of the library sites is called Career Cruising. This is the same tool that, through a Wall Street West/WIRED grant, has been implemented in Western Wayne, Wayne Highlands, and Wallenpaupack school districts. Another of the new resources that will be available is real-time online job interview practice called Interview Stream. Using a webcam and the library's Internet connection, people will be able to come for an "interview" and then receive advice on how to strengthen their skills to make a better impression.

Workforce Wayne is seeking donations for furniture items for each Community Career & Training Site. Items needed include: computer chairs, computer desks,

printer stands, and magazine/brochure holders. If you would like more information regarding the Community Career & Training sites please e-mail Lyndsay Birmelin, Workforce Coordinator at LBirmelin@workforcewayne.org

Finally, a thank you to everyone who attended the Workforce Wayne 3rd Annual meeting at Woodloch Springs in May. With 70 community members in attendance, it was a great day to communicate Workforce Wayne's vision and progress to both new and seasoned supporters. Stay tuned next month for ways that you can ensure Workforce Wayne's continued prosperity in our community.



Commissioners Corner

As we work our way through the clouds of current economic challenges and uncertainties, I expect to see a great deal of opportunity reveal itself in the future.

Wayne County is full of energetic, ambitious people who are not satis-

fied to sit back and take what comes. The great people here are already working feverishly to create a setting where opportunity can grow and thrive.

We will work through this and be stronger for the hardships we have

endured.

Brian W. Smith - Chairman
Wayne County Commissioners
BSmith@co.wayne.pa.us
925 Court St., Honesdale, PA 18431
(570) 253-5970, Ext. 1320



WAYNE COUNTY CHAMBER OF COMMERCE MEMBER DISCOUNT PACKAGE

- Reward your employees
- Thank loyal customers or clients
- Take your family or friends
- Enjoy local history and scenery

Special package for Chamber members for the Stourbridge Line Rail Excursions
10 Tickets for \$170 for 2009 excursions

(excluding Bavarian Festival and Grape Express)

Additional tickets may be purchased for \$17 each - a savings of \$3-\$10 per ticket.

Please call the Chamber at (570) 253-1960 for more information.

For complete schedule visit www.waynecountycc.com

Reservations are required prior to the excursion.

Leadership Wayne

The Wayne County Chamber of Commerce is now accepting applications for the Leadership Wayne Class of 2010. Classes will begin in September 2009.

The purpose of Leadership Wayne is to educate a group of potential leaders who reside or are employed in Wayne County on all aspects of the community.

This is a one year program that will

entail spending one full day each month learning about such topics as an Overview of the County, Economic Development, County and Local Government, Education, Health Care, Human and Social Services, Criminal Justice System, Culture and Community and all topics that are important to Wayne County.

The cost is \$495, and partial scholarships are available.

Applications are available at the Chamber, and must be returned no later than August 1st.

The class is open to the first 20 applicants only.

If you know of an interested individual, or would like to send an employee, please contact the Chamber at 253-1960 or e-mail us for more information at info@waynecountycc.com

Members in the Spotlight

Congratulations to The Hanson Gallery & Decorium on their Grand Opening. Stop by to see the spectacular renovations, art work, supplies and decor. They are located at 1037 Main Street in downtown Honesdale.

Ladore Conference Center has opened the doors to The Pavilion, which offers a state of the art sound system and acoustics, dining capacity of 325, theater seating for 1,000+, meeting rooms, gymnasium and much more! Anyone interested in using the facility may contact Ladore at 488-6129.

Visit the Chamber offices to see the wildlife photography of George Knickerbocker. All photos were taken locally. Do not miss this beautiful exhibit.

New Energy Program

The Chamber is now offering an energy program exclusively for our members. Deregulation has arrived. Are you using it to your advantage? OnDemand has the know-how to help your business successfully navigate the new energy marketplace.

Using energy prudently means more than controlling how much you use and when you use it. Keeping energy systems current and

understanding the complexities of an intricate market are vital to ensuring that you get the most of your energy dollars.

Few companies have the time or background to make informed decisions in this environment. Even fewer have the resources to manage their energy usage wisely on a daily basis.

OnDemand develops, implements

and monitors customized energy management systems for Chamber members. Their programs maximize energy efficiency, control energy use and improve results. OnDemand's energy solutions will reduce your total energy costs.

We feel that this will be one of the most important benefits that we can offer our members.

Facelift Campaign

The Visitor Center was built over 13 years ago and is in need of some renovations. The Community and Board Rooms are utilized for more than 600 meetings each year by organizations and non-profit groups. These rooms are in need of patching and painting.

The sidewalks are in dire need of replacement on the Commercial Street side of the building.

These are large and costly projects. The Chamber needs funding assistance and is initiating the "Facelift Campaign" to offset the costs of the

renovations. If you are interested in donating towards this campaign, please contact the Chamber at 253-1960. Donations may be mailed to:

32 Commercial St., Suite 200
Honesdale, PA 18431

Save the Dates

July 3 - Fireworks in downtown Honesdale with events in Central Park starting at 5 PM (raindate July 6)

July 4 - Parade in Pleasant Mount 10 AM
Parade in downtown Hawley at 12 PM

Fireworks over Lake Ariel & Lake Wallenpaupack
July 11-12 Antique Show -Wayne Highlands Middle School

July 12 - Lake Ariel Fireman's Parade

July 18 - Audubon Art & Craft Festival Wallenpaupack Middle School

July 23-25 Sidewalk Sales in Honesdale

July 31-August 1 Wayne County Arts Alliance Open Studio Tour

August 7 -15 Wayne County Fair

August 8-9 Antique Show at Wallenpaupack High School

August 15 - Waystock Street Festival in Waymart

September 1-7 Greene-Dreher-Sterling Fair

October 9 - Breakfast with State Legislators

Power Outages? Be Prepared . . .

with Electrical Supplies from
Our Honesdale Branch . . .



Friedman Electric's Honesdale Branch Manager, Chris Brickhouse and the Friedman team, will work with you to find the most reliable generator or battery to meet all your commercial or residential needs.

<Chris Brickhouse



GENERAC

GENERATORS—Stand-by-Power Systems, At the Ready!

Protect your business or residence with state-of-the-art power solutions from outstanding products and manufacturers like Generac® Your Friedman Electric Generator Specialist is Dale, call and ask him about Generac® generators. **Dale Elston P:(570) 654-3371 ext. 243**

Friedman Electric can help with all your generator requirements including:

- take-off / quotation
- design & build projects
- project management of large projects
- sizing / start-up requirements

Suffering From Battery Burnout?

Problem, SOLVED! Friedman's doesn't believe in one-size-fits all! We work with you to ensure that you find a correct replacement or solve the problem, no matter what your battery needs are. From marine to powersports to farm-use batteries— we will work to ensure the right match for your specific needs. **Questions? Tim, is your Friedman Electric Battery Specialist, ask him about Deka® Batteries. Tim Smeltzer P:(570)784-9488 ext. 413**



250 Sunrise Avenue, Honesdale, PA 18431

P: (570) 253-4775



To learn more about our specialists in all our branches and find out more visit:

www.friedmanelectric.com

It's all about
ME
Maximum Earnings
Checking

It pays to have Workplace Banking
with ME Checking!

4.51%
APY*

Contact:
Cherilynne Harrington
Workplace Banking Consultant
570-558-8531 or take this flyer
to the nearest branch location.

Plus enjoy these great benefits:

- No Minimum Balance
- No ATM Fees Anywhere**
- Free Online Banking and Online Bill Payment
- Free Checks
- Free FNCB CheckCard
- Preferred Rate on Holiday and Vacation Clubs***
- Overdraft Protection to Qualified Individuals
- No Fee Travelers Checks
- Free Online Statement
- One Year Free Safe Deposit Box
- Preferred CD Rates

You must set up direct deposit through your employer to take advantage of this offer.

First National Community Bank ME Checking Rate Qualifications Each Cycle:

- Make 10 Check Card Transactions
- Enroll and Receive Electronic Statements
- Set up 1 Direct Deposit or Automatic Payment from your Account.

*Maximum Earnings Rates 4.51% Annual Percentage Yield (APY) paid on balances between one penny and \$25,000, and 1.01% APY paid on all amounts above \$25,000 each cycle when the minimum qualifications are met. If you do not meet the qualifications per cycle, your account will still function as a free checking account earning Base Rate 0.05% APY; however, it will not receive ATM fee reimbursements for that time period. Rates are accurate as of 10/20/2008. We may change the interest rate and APY at any time after the account is opened, but the account will continue to earn a premium rate. No minimum balance required. Available to personal accounts only. No monthly service charge. ** ATM fee refunds per cycle when qualifications are met. ***Auto draft payment required.

FNCB

fncb.com
877-TRY-FNCB





Bethany Children's House Montessori Pre-School

Accepting Enrollment for 2009-2010 school year

18 mon. - 3yr. Program
3-6 yr. Program



- Science & Nature
- Language & Reading
- World Cultures
- Art & Music
- Math
- Hands on Activities
- Beautiful Playground



www.bethanychildrenshouse.org
(570) 253-6359

147TH ANNUAL

GAMES • RIDES

FOOD • EXHIBITS



WAYNE COUNTY
FAIR

All new amusements & rides by WADE SHOWS INC.

AUGUST 7-15, 2009

FAIRGROUNDS located on ROUTE 191 North of HONESDALE, PA



FARM ANIMALS • THRILL SHOWS • LIVE ENTERTAINMENT

Show Tickets on Sale

570/253-5486

www.WayneCountyFair.com

**MIDWAY OPENS
AT 12 NOON!**

\$8

PAY ONE PRICE

per person (24 mos. & older)

*All rides have posted height requirements

Woodstock comes to Waymart

- *Live Music
- *Arts, Crafts & unique items
- *Food
- *Fun for the entire family

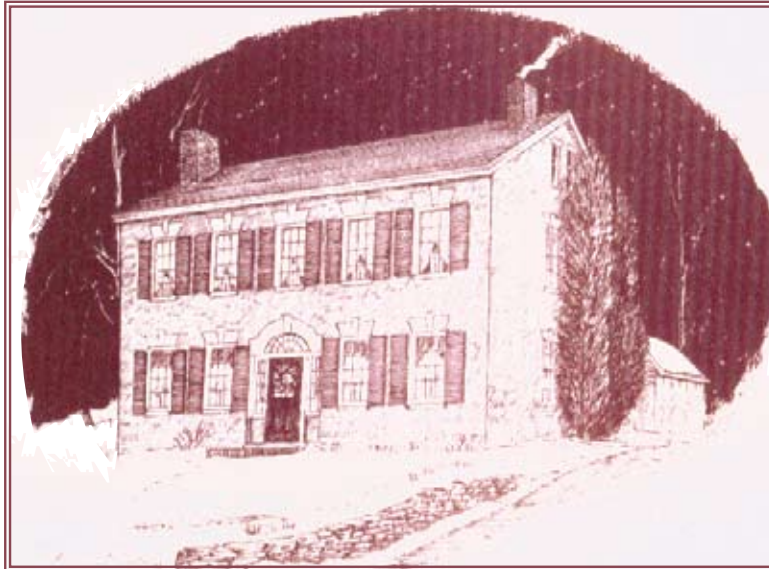


Noon to 8 PM
Saturday, August 15th



James Manning House Bed & Breakfast

*Celebrating
our 1st Anniversary*



- *Each room has private bath*
- *Wayne County Historic House*
- *Antique and collectible furnishings*
- *Common areas, gardens and large patio*
- *Hearty Breakfast included*
- *Pennsylvania Dutch Hospitality*
- *One of Wayne County's best kept secrets*
- *Great for out of town family or your business clients*
- *No minimum stay required*
- *Long term stay available*

421 Wayne Street - Route 670

Bethany, PA 18431

(570) 253-5573

www.jamesmanninghouse.com

Keeping it simple

Helping our customers **and** their employers,

Now accepting cards for:

FSA

FLEXIBLE SPENDING ACCOUNTS

HSA

HEALTH SAVINGS ACCOUNTS

Your health is our only business



STEPHENS PHARMACY
NORTHEAST MED-EQUIP

2 store locations

Honesdale: 570-253-7700 Hawley: 570-226-3900

stephenspharmacy.net

Save time. Save money.

SPENCER  PRINTING

**216 Willow Ave
Honesdale, PA 18431
570-253-2001**



Bulk Rate
US Postage
PAID
Permit #106
Honesdale, PA
18431