

The PERFECT GIFT to give from the place where COMFORT is ALWAYS in fashion.

2010 HOLIDAY GIFT GUIDE



Purchase your Eneslow Gift Card.
No Limits! No Expiration Date!



Donate \$5 to Soles4Souls at Eneslow and receive a **10% discount** on FOOTWEAR!

This holiday season, we encourage you to do even more for this worthy cause. When you donate \$5 to Soles4Souls at the register you will receive a 10% discount off of your purchase of Eneslow shoes and services.*
*Some restrictions apply. Now until 12/24/2010.

Ziera - a new era in loving your feet



It's our great pleasure to introduce a wonderful footwear brand that we just know you (and your feet) are going to love. Ziera — a new era in loving your feet.

Ziera is the lifelong dream of two New Zealand podiatrists (and perfectionists, as it turns out). Back in 1946, these two men took on the ambitious (and brave) task of studying 10,000 feet, from which they formed their own orthopaedically correct 'lasts' or shoe moulds. They then created a range of comfortable yet stylish footwear; shoes that were snapped up faster than you could say "aahhhhhh, heavenly".

Six decades later, this philosophy of shoe making led to Soft Journey®, a unique, cushioning system of gels and shock absorbing materials designed to give you that wondrous, walking-on-air feeling. We combine this with light, flexible, hardwearing, slip-resistant soles, and top it off with the softest, supplest leathers and suedes, to bring undeniable pleasure to your soles and to your soul.

As well as being beautifully comfortable, we want Ziera shoes to be outright beautiful. Simply put, no shoe walks out our door if it isn't both blissful and beautiful.

We call it beautiful inside, beautiful outside. Enjoy.



Shoes are generally available in sizes 36 - 43 (Medium, Wide, & Extra Wide). Please call for availability.

Sizes ranging from 36 -43 M, W, XW
Prices range at \$175 - \$195
Call for details at 1.800. ENESLOW



JADE
Tawny
Black



REMEMBER
Black
Chocolate



REASSURE
Slate
Black



BEEP BEEP
Black

BEDROCK
Black
Chocolate

Soft Journey® Comfort Technology

Ziera shoes are beautiful from the inside out. Leading the world in shoe comfort technology, Ziera has brought together a unique combination of materials for the ultimate in cushioning comfort. We call this Soft Journey®.



SOFT TOUCH

A layer of the softest leather feels great against the foot and draws moisture away.

SOFT PILLOW

Dual-density Poron® is a high-tech material that gives both immediate softness and 100% bounce back cushioning.

SOFT STEP

Heel inserts of Technogel® provide targeted shock absorption.

CONTOURING SUPPORT

A shaped form that's anatomically contoured to support and stabilize the foot.

STABILISING CRADLE

A firm foundation layer that cradles the Contouring Support, preventing the foot from rocking.



CAMBER
Black



KAYLEE
Pewter
Black

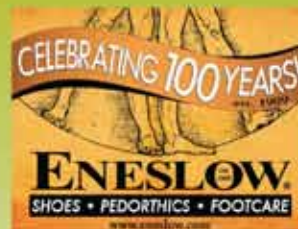


Donate \$5 to Soles4Souls at Eneslow and receive a 10% discount!

Details on page 15

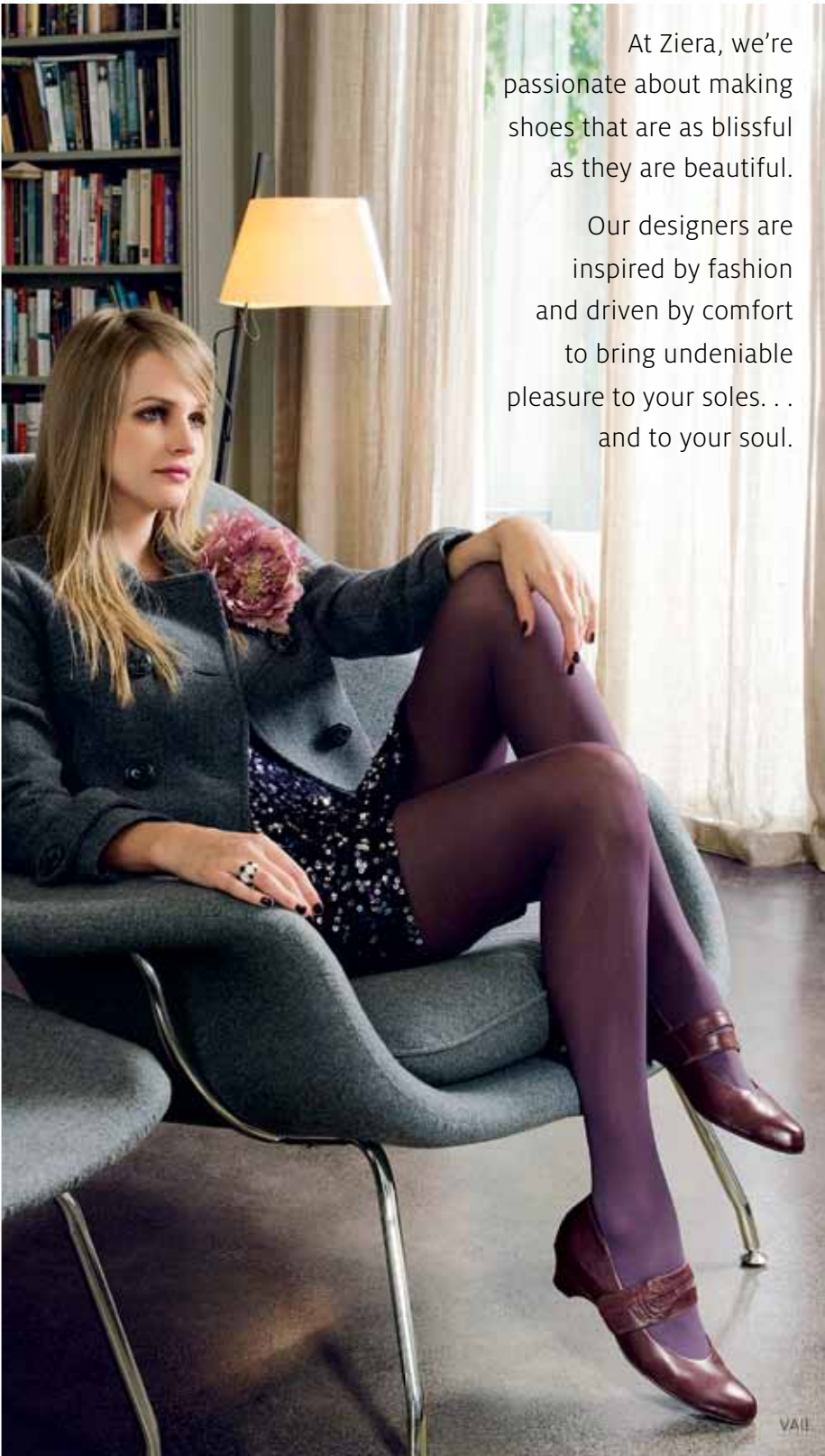
TRY ON & WIN

It's Easy at Eneslow.
Just Ask for details.



At Ziera, we're passionate about making shoes that are as blissful as they are beautiful.

Our designers are inspired by fashion and driven by comfort to bring undeniable pleasure to your soles... and to your soul.



GLOVE
Black Suede
Full removable orthotic



CONTROL
Black, Chocolate, Slate, Navy
3/4 removable orthotic



VAIDER
Black



VAIL
Chocolate
Black



VENTURA
Black
Cappuccino



ZIERA®

Customers must try on any pair of Ziera to enter — one entry per customer. Entries close 12/24/2010. The winner will receive a free pair of Ziera of her choice.

TRY ON & WIN

Simply try on a pair of Ziera and automatically enter drawing for a **FREE PAIR**. No purchase necessary.

free gift

Get a stunning brooch
free with any purchase
of Ziera shoes.

Valued at \$20

While supplies last.



CADDIE
Pewter
Black
3/4 removable orthotic



SCARLET
Black
Chocolate
Full removable orthotic



SHARI
Black sparkle
Full removable orthotic



Donate \$5 to Soles4Souls
at Eneslow and receive a
10% discount!

Details on page 15

Sizes ranging from
36 - 43M, W, XW

Prices range
at \$175 - \$205
Call for details at
1.800. ENESLOW

where style
meets comfort

Kumfs is a New Zealand company
that's been making fabulously
comfortable fashion footwear
for over 60 years. Founded
by podiatrists, Kumfs has an
innovative approach to footwear
design — combining thorough
anatomical understanding of feet,
advanced comfort technologies
and the latest fashion trends.

RHAPSODY
Black, Chocolate
Full removable orthotic



IVANA
Black Leather
Black Suede
3/4 removable orthotic



REBECCA
Chocolate
Full removable orthotic



DAZZLE
Black
Full removable orthotic



Kumfs®

A Tradition of Excellence - In 1965, Martin Michaeli founded MEPHISTO with a singular goal... "To make the world's finest footwear." Today, Mr. Michaeli still owns and operates MEPHISTO from the world headquarters and original factory in Sarrebourg, France. His shoes are now sold in over 60 countries, with the U.S. headquarters

MEN

Sizes ranging from 7 - 13

Prices range at \$205 - \$435
Call for details at 1.800. ENESLOW



The GOODYEAR WELT shoes by MEPHISTO have incomparable quality and extraordinary fit. This is traditional shoemaking at its best, whereby a double stitch holds the upper top grain leather along with the SOFT-AIR midsole and the leather welt together with the outsole.

This combination of SOFT-AIR TECHNOLOGY with the GOODYEAR construction technique is a MEPHISTO exclusive. This construction method ensures soft and effortless walking comfort. GOODYEAR WELT is one of the oldest and noblest of shoe making traditions.

You feel the comfort and softness of the GOODYEAR WELT shoes by MEPHISTO almost the moment you first wear them.

Each pair of hand made GOODYEAR WELT shoes is a unique piece of work.



Ladan
Black Ambassador. Also in Chestnut Ambassador



Okran Gt
Dark Brown Wildskin. Also In Black



Bonito
Chestnut/Dark Brown. Also In Black/Birch



Cap Vert
Black Smooth. Also In Rust Smooth



Match
Tan Grain Leather. Also In Black Grain Leather



Hurrikan
Tan Leather. Also In Black Smooth.



Levius
Black Ambassador

Goodyear Welt



Libio
Chestnut Pebble Grain. Also In Black Pebble Grain.



Edlef
Dark Brown Smooth. Also in Black Smooth.



Habbo
Dark Brown SportBuck. Also In Black Grain



Challenge
Dark Brown

ALLROUNDER
BY MEPHISTO



Caldera
Black Suede/Mesh

ALLROUNDER
BY MEPHISTO



Jakin
Black Natural. Also in Dark Brown Natural



Janeiro
Black Natural. Also In Dark Brown Natural



Raptor
Black Calf

SANO
ACTIVATES BODY & SOUL
BY MEPHISTO

located in Franklin, Tennessee. MEPHISTO represents a world-class product with loyal customers and a brand driven by one man's unshakable belief that excellence can and will be achieved every day, with every pair.

Sizes ranging from 5 - 11
 Prices range at \$165 - \$350
 Call for details at 1.800. ENESLOW

MEPHISTO M

WORLD'S FINEST FOOTWEAR

WOMEN



Feline
 Chianti Imperial With Adjustable Strap. Also In Black.



Figura
 Chestnut Bucksoft. Also In Black Bucksoft



Niagara
 Black Suede Mesh



Odala
 Black Crinkle Pat. Also In Bronze Crinkle Pat



Niro
 Black Suede Mesh. Also In Additional Colors



Taliena
 Black Nappa



Nord
 Black Suede/Mesh



Wendy
 Brown George/Buck. Also In Black George/Buck.



Evasion
 Black Nubuck



Escape
 Steel Perl Calf

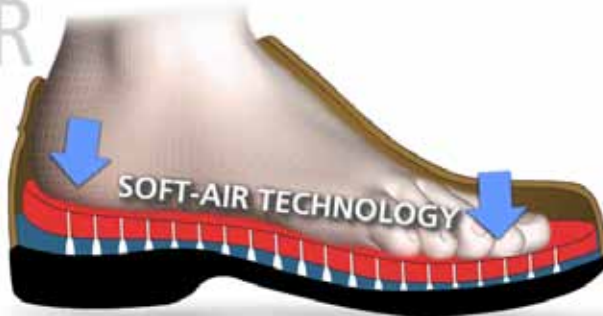


Excess
 Steel Perl Calf. Also In Bronze Perl Calf

SOFT-AIR

FOR A COMFORTABLE AND EFFORTLESS WALKING EXPERIENCE

The SOFT-AIR TECHNOLOGY of MEPHISTO makes tired feet a thing of the past. The flexible SOFT-AIR midsole reduces the shocks from walking to a minimum. Thus offering protection to your feet, relief to your joints and proper care to your back.



SANO

ACTIVATES BODY & SOUL
 by MEPHISTO

YOUR EVERYDAY FITNESS TRAINER!

Walking with SANO shoes allows you to stimulate long neglected muscles, eliminate muscular contractions, strengthen muscles, ligaments and tendons, activate blood circulation and much more.

Visit Eneslow and experience a pair for yourself!



THE GUARANTEED TO KEEP YOU DRY™ PROMISE

PERFECT CLIMATE COMFORT.

No matter what the weather, GORE-TEX® Footwear keeps your feet dry and comfortable, providing perfect climate comfort. GORE-TEX® Footwear is durably waterproof, breathable and protects you from even the toughest conditions – guaranteed.

DETAILED DESCRIPTION:

GORE-TEX® Footwear is ideal for a wide range of outdoor activities.

GORE-TEX® Footwear enables you to enjoy your outdoor activities to the fullest, regardless of the weather conditions.

All GORE-TEX® Footwear is manufactured according to strict quality and performance standards. The result is the GUARANTEED TO KEEP YOU DRY™ promise:

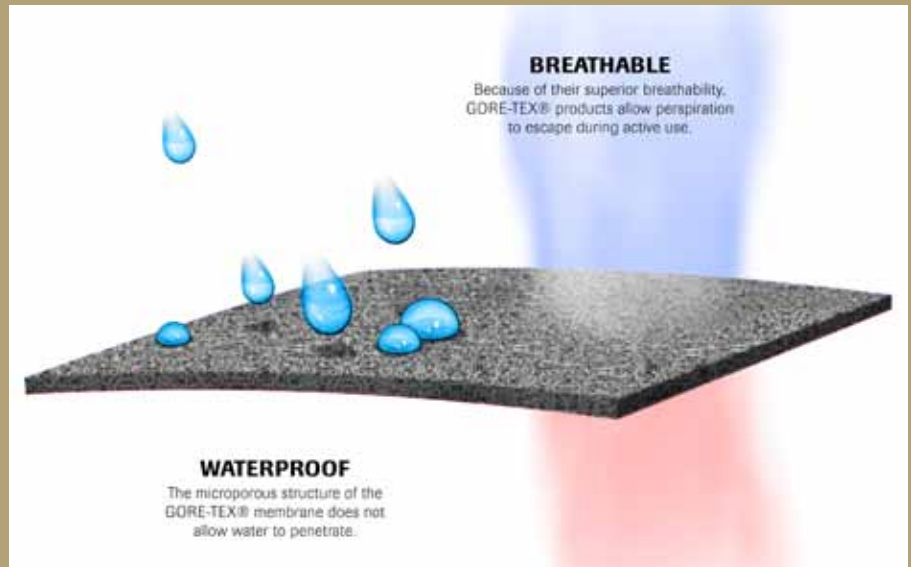
If you are not completely satisfied with the waterproofness or breathability of your GORE-TEX® Footwear, we will repair it, replace it or refund your purchase price.

THE GORE-TEX® MEMBRANE – WHAT IT IS HIGH-TECH FOR YOUR FEET

The GORE-TEX® membrane is the heart of GORE-TEX® Footwear. It is completely waterproof but permeable for water vapor. It contains over 1.4 billion microscopic pores per square cm. These pores are 20,000 times smaller than a water droplet but 700 times larger than a water vapor molecule. The result: Water from the outside will never penetrate and perspiration from the inside can escape easily. This is why your feet always stay dry and comfortable in GORE-TEX® Footwear.

DETAILED DESCRIPTION:

The GORE-TEX® membrane is the heart of GORE-TEX® products. W. L. Gore & Associates has developed a range of different GORE-TEX® membranes to meet the specific needs of each end use.



EXPERIENCE MORE



GORE-TEX, GORE, and GUARANTEED TO KEEP YOU DRY are trademarks of W.L. Gore & Associates, Inc.

ECCO® MEN: Add comfort to your style with these rugged outdoor shoes and boots.



Kolyma Semi-Mid
Espresso



Track II Low
Bison Oiled Nubuck



Track V Mid
Bison Oiled Nubuck. Also in Black



Turn Boot
Brown Oiled Nubuck. Also in Black



Sizes ranging from 40 - 50 Eu.
Prices range at \$205 - \$220
Call for details at 1.800. ENESLOW

ara



Fashionable ladies' shoes with exceptional fitting and quality.



Bologna High
Black/Stretch



London Mid
Brown.
Also in Black



Portofino High
Brown Leather.
Also in Black/Stretch



Luzern
Black Leather



Munchen Lace
Brown Suede/Fur Lined.



London Mid
Black/Stretch



Portofino Low
Black/Stretch. Also In Brown.



Passau
Black Suede



Munchen
Black Suede/
Fur Lined/Zipper



Bologna Low
Black/Stretch, With Inside Zip
And Wider Heel For Stability

Sizes ranging from 5 - 11 1/2.
Prices range at \$185 - \$315
Call for details at 1.800. ENESLOW

STAND TALL. WALK

Clarks



Sizes ranging from 8 - 13M, W.
Prices range at \$155 - \$175
Call for details at 1.800. ENESLOW



Street High
Brown Leather



Rockie High
Black Leather



Street Lo
Brown Leather



Rockie Lo
Brown Leather

new balance



WOMEN

Featuring GORE-TEX® upper with ABZORB® cushioning and an injection-molded EVA midsole and the Ndurance® outsole enhancing traction and durability.

WO900GT
Brown

MEN



MO900GT
Brown



Men sizes ranging from 8 - 13D, 4E.
Women sizes ranging from 6 - 11B, D.

Priced at \$89.95

WOMEN: Whether on a city street or a country lane, these sturdy casual styles are a must-have!

Sizes ranging from 35 - 42 Eu.
Prices range at \$190 - \$225
Call for details at 1.800. ENESLOW



Charm Low
Black Leather, Waterproof Lining



Choice
Coffee Nubuck



Dhaka
Moon Rock



Novelty
Black Leather/Suede, Inside Zipper





MERRELL

MERRELL COLLECTION

MEN



Chameleon 3 Ventilator Mid
Gunsmoke. Also in Kangaroo and Otter



Moab Mid GTX XCR
Dark Earth



Moab GTX XCR
Chocolate



Whether you're out hiking, out on the town, or just staying in for the day, these exceptional men's and women's shoes offer you the casual comfort you've come to expect from Merrell!



Men sizes ranging from 8 - 13M, W.
Women sizes ranging from 6 - 10M, W.
Prices range at \$95 - \$150
Call for details at 1.800. ENESLOW

WOMEN



Siren Sport GTX XCR
Brindle.



Siren Song Mid Sport GTX
Sea Grass

ROCKPORT®

From board-walk to boardroom, nobody gives you the comfort, style, and durability of authentic Rockport men's and women's shoes.

MEN



Vail Lodge
Pinecone Full-Grain Leather And Mesh



Vail Lodge
Black Full-Grain Leather And Mesh



WOMEN



Addison Short Casual Boot
Dark Brown Leather Upper



Addison Short Casual Boot
Black Leather Upper



Men sizes ranging from 7 - 13W
Women sizes ranging from 6 - 10
Prices range at \$185 - \$200
Call for details at 1.800. ENESLOW



LOWA

LOWA's All Terrain Collection are perennial favorites for day hiking and short-haul, weekend backpacking because they're phenomenally comfortable, supportive and cushioned.

MEN



Renegade II Lo
Black



Renegade II High
Black



WOMEN



Renegade II LL Lo
Taupe/Sepia



Renegade II Mid WS
Taupe/Sepia



Men sizes ranging from 8 - 13
Women sizes ranging from 6 - 11
Prices range at \$185 - \$200
Call for details at 1.800. ENESLOW

MBT GTX COLLECTION

When walking in MBTs, the ground is no longer flat and stable, so the body has to use more muscles to compensate and create stability. This activates the whole body, increases back muscle activity, improves posture, tightens buttocks and thighs and even burns more calories. All while reducing stress on the ankle, knee and hip joints.



Tenga Mid
Black. Also in Chocolate



Shuguli
Black Leather



Fora Black - Men
Kimundo Black - Women

WOMEN



\$199.99

MSRP
Originally \$245 - \$265

MEN



Tembea
Black.



Fanaka GTX
Chocolate. Also In Black.

WOMEN



Maliza
Black. Also In Brown.



Tunisha
Black

Increased metabolism, better circulation,
improved posture, easier on your back & joints.
Not bad for a shoe. Very good for you.™
And now, at an unbeatable price of \$199.99,
your new stronger body is waiting.

Just step into it.

Sizes ranging
from 35 - 49 Eu.
Prices range
at \$199 - \$275
Call for details
at 1.800. ENESLOW

CHIE MIHARA

MADE IN SPAIN



Canaria
Black Suede/Leather Front & Cuff On 3" Heel

CHIE MIHARA COLLECTION

Chie's goal in designing footwear is to create styles that are feminine, fun, and truly comfortable. Every Chie Mihara shoe features an anatomical footbed that Chie designed specifically to accommodate a woman's foot. Chie wants women to visually and emotionally connect to her shoes, while she takes care of the practical side with careful attention to architecture and craftsmanship.



Laur
Black Wide Laced Suede Mary Jane



Jeren
Blue Mary Jane With T-Strap

Sizes ranging from 34 - 42
Prices range at \$395 - \$550
Call for details at 1.800. ENESLOW



I ♥ ITALIAN SHOES

MAJORA COLLECTION

MADE IN ITALY

Molores ma velique optam, qui quam ditione nobisitium rerum facepe nosant, seque dolupta verioru ptatquos explit liquamenet et endi con ent quam utem qui illabo.



Vetrex 285
6880 Laced Sportwear W/Brown Leather And Black Suede.
Also In Black And Grey Leather And Suede



Camoscio Grigio
6902 Grey Suede Moccasin W/3 Stylish Colorful Buttons

Sizes ranging from 35 - 42
Prices range at \$295 - \$350
Call for details at 1.800. ENESLOW



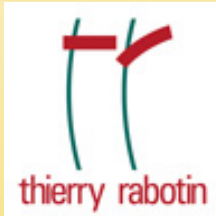
Zeppa Nero
6898 Black Suede Moccasin With Studded Gold Buttons



Arcadias Otello
6866 Brown Leather Slip On Moccasin. Also in Black



Camoscio Nero
6902 Black Suede T-Strap Moccasin



MADE IN ITALY

THIERRY RABOTIN COLLECTION

These light-weight high-style shoes feature all the classic details that have made this famous designer —Leather-lined "sachetto" construction, shimmering prints over sumptuous leather uppers, and extra-light rubber outsoles.



Paloma Black Tweed Pump
Classic Round Toe Dress Pump With Bow



Dharma Black Sahara/Micro
New Wedge Slip-On, Stretch Fabric Overlay



Forward
Black Suede

Sizes ranging from 35 - 42
Prices range at \$395 - \$425
Call for details at 1.800. ENESLOW

PAS DE ROUGE COLLECTION

Less than 150 grams, 50 years of made in Italy and unique style 24 hours a day: all this in a single shoe. Pas de Rouge incorporates ultra-light materials and a process called "sachetto" (slip lasting) to create a shoe that is not only eye catching and a passion for beauty, but also enchants the foot that fits like a glove.



MADE IN ITALY



Rino Black Suede
Wedge With Slim Criss-Crossed Bands Across Vamp



Petra Black Suede
Suede Upper, Leather Lining And Black Zipper



Nicla Black Suede
Black Suede Pump With Leather Bow At Toe



Lucia Black Suede
Black Suede Pump With Elastic Cross Over Band



Lucia Black Suede/Multi
Lace Up Oxford Wing Tip. Two Toned Suede Body




Tata Black Suede
Embossed Suede With Elasticized Center Slit



Dalia Black Suede
Black Ankle Boot With Exposed Back Zipper

Sizes ranging from (please call)
Prices range at \$395 - \$495
Call for details at 1.800. ENESLOW



Donate \$5 to Soles4Souls at Eneslow and receive a 10% discount!
Details on page 15

SCOLARO COLLECTION



Beatrice AF16
Sophisticated Brown Dress Flat W/Beige & Navy Bow
Also Sophisticated Black Dress Flat W/Grey & Purple Bow



Sport Plus Tecno Nero 456
Leather Black Boot



Lorella
593Sn Black Suede/Nubuck With Flower Appliqué. Also in Brown.



Sizes ranging from 36 - 41 Eu.
Prices range at \$295 - \$395
Call for details at 1.800. ENESLOW

Sport Plus Tecno Nero 454
Leather Black Boot



1164 Wedge Boot
Black Leather



Lory Tacco
5780 Brown Suede/Nubuck. Also in Black

earth® 3.7° to wellness

Just like walking barefoot in the sand, every Earth® style features a slight sole incline of 3.7°.

This helps to gently and naturally tone, firm and strengthen the body, while reducing joint stress and improving posture.

An anatomically-correct arch supports the foot through the stride, and a wider forefoot area lets toes spread out and relax.

Earth's environmentally-friendly Bio-Foam™ cushioning molds to the shape of the foot over time, absorbs and displaces shock.

Earth®. Good For You. Good For The Planet.™



Sizes ranging from 6 - 11
Prices range at \$99.99 - \$149.99
Call for details at 1.800. ENESLOW



Central
Bridal Brown



Pride
Grey Multi
Also in Black



Swank
Date
Also in Black



Elite
Cherry
Also in Black

La CANADIENNE MONTRÉAL

La Canadienne boots are crafted using only the finest Italian materials and guaranteed waterproof. Insoles are anatomically correct while the flexible outsoles provide traction against inclement weather. La Canadienne boots ensure maximum comfort and style.

Sizes ranging from 6 - 11M, W.
Prices range at \$215 - \$235
Call for details at 1.800. ENESLOW



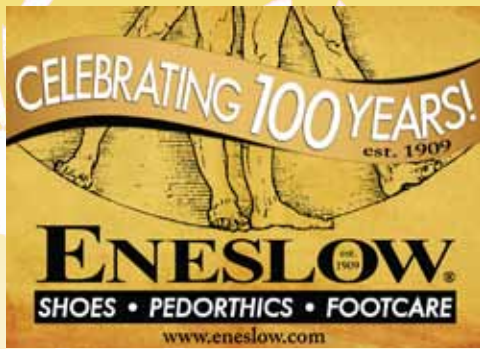
Perla
Black Leather



Palmina
Black Leather



Evitta
Black Suede



Eneslow – A perfect fit for your feet!

Eneslow's Board Certified Pedorthists are always ready to provide you with a **FREE Pedorthic Assessment**. We look at:

- **Your existing shoes** – by analyzing wear patterns we can tell a lot about what type of footwear will work best for you
- **Your feet** –we measure both of your feet, including length, width, and circumference and examine your foot and ankle range of motion
- **How you walk** – gait analysis helps us determine how your footwear is helping you function (or keeping you from functioning) and how best to help
- **Your prescription** – we take foot impressions and casts as prescribed and work with your podiatrist to help maximize the comfort and function of your feet

Eneslow is your full-service source for ready-made and custom shoes, orthotics, and footwear modifications! Our master pedorthic technicians fabricate custom-made shoes and orthotics on-site to meet your specific needs. We offer:

- **Shoe makeovers** – we can customize ready-made shoes to better fit your feet. Our technicians can even “make stilettos feel like sneakers.” And, we can also restore your well-worn shoes so they look and feel better than new
- **Internal and external shoe modifications** – we can enhance fit and function from the inside of your shoes, while balancing the foot from the outside. Modifications include widening, deepening, and lengthening; raising or lowering heels and soles; cushioning; and adding special closures
- **Custom dress shoes** – the ultimate in comfort and style, made using the finest quality materials
- **Custom molded shoes** – for feet that cannot fit into ready-made shoes
- **Custom foot orthoses** – to redistribute forces, control motion, alleviate pain, and improve balance and gait



Eneslow Master Technician German Jaramillo performing shoe modification.



Custom Shoe Relast

Eneslow – Where comfort is always in fashion



Donate \$5 to Soles4Souls at Eneslow and receive a 10% discount on FOOTWEAR and SERVICES!

Eneslow invites you to join us in supporting the work of Soles4Souls – a charitable organization that distributes donated shoes to people in need.

Soles4Souls collects shoes from the warehouses of footwear companies and the closets of people like you. At the entrance of each Eneslow store you will find a bin where you can deposit your gently worn shoes for donation. Since 2005, Soles4Souls has given away nearly 12 million pairs of new and gently worn shoes (currently donating one pair every 7 seconds). The shoes are distributed to needy people throughout the United States and over 125 other countries.

This holiday season, we encourage you to do even more for this worthy cause.

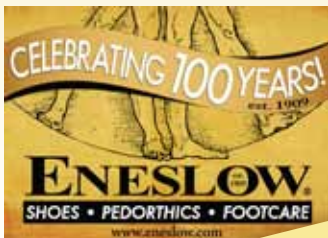
When you donate \$5 to Soles4Souls at the register you will receive a 10% discount off of your purchase of Eneslow shoes and services.*

10% On all Eneslow branded products and services. (i.e. custom shoes, shoe modifications, shoe repair, foot orthotics).

***Some restrictions apply.**

Prior to final purchase, simply ask for a Soles4Souls donation card and donate a minimum of \$5.00 in order to receive an immediate 10% off of your total purchase. Not all sizes or colors in-stock. Not all shoes on sale. Does not include current “On Sale” or Clearance Center items. or “Special Orders”. No rain checks. Exclusions may apply. Not valid on prior orders. Not responsible for typographical errors. Custom shoes not included. See store for details.

Offer valid until 12/24/2010.





UGG®

a u s t r a l i a



Superboot Tall Leather
Black
Smoke



Superboot Short Leather
Black Leather
Olive Leather



Muktuk
Black
Chestnut
Chocolate



Bailey Button Triple
Black
Chestnut
Chocolate



Women: Adirondack II
Black, Blackberry
Wine, Grey,
Otter, Sand
Obsidian

Men: Butte
Club Brown
Worcester - Short
Black - Short



Classic Short



Park Ave 5 & Little Neck Only!



Original Gloss

Green

& Original

Deep Atlantic

Grey

Purple



Hunter Liners/ Welly Socks
Red, Black, Green, Cream
Charcoal, Navy, Leopard, Navy
Striped and more.



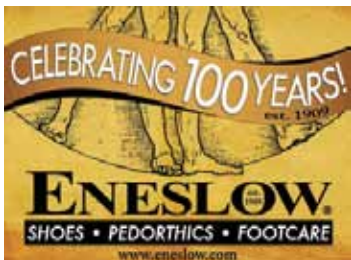
Park Ave 5 & Little Neck Only!



Donate \$5 to Soles4Souls at Eneslow and receive a

10% discount!

Details on page 15!



Treat your feet like you'll have them for a lifetime!

470 Park Avenue South
@ 32nd Street,
NY, NY 10016-6819
212.477.2300

1504 Second Avenue
bet. 78th and 79th St,
NY, NY 10075
212.249.3800

254-61 Horace Harding Expressway
Off L.I.E. exit 32
Little Neck, NY 11362
718.357.5800



Also visit us at
www.eneslow.com or email us
at info@eneslow.com

Subscribe to our newsletter
at www.eneslow.com/register

Visit your local Eneslow!

- Board Certified Pedorthists
- NYC's Largest Selection of Comfort Footwear to fit every lifestyle for:
 - Men — Women — Children (Little Neck)
- Widths to Extra-Extra Wide
- Prescriptions expertly filled — Footwear and related
- FREE Pedorthic Assessment
- Custom Shoes & Orthotics, Shoe Modifications, Relasting and Shoe Repairs done on premises (470 Park Ave South)
- Large selection of Ready Made Orthotics
- Footcare Products • Comfort Shoes

Just type ENESLOW to find us on:

