

# *Energy Medicine: Lasers & Degenerative Disease*

*Dr. Garry F. Gordon, MD, DO, MD(H)  
Gordon Research Institute  
Payson, Arizona USA*

*Webinar Presentation  
March 4, 2013*



## **WEBINAR DISCLAIMER**

**Longevity Plus and Dr. Garry Gordon do not provide medical advice, diagnosis or treatment through this webinar. The content of this webinar, such as text, graphics, images and other material contained within are for informational purposes only. The content is not intended to be a substitute for professional medical advice, diagnosis, or treatment. Always seek the advice of your physician or other qualified health provider with any questions you may have regarding a medical condition. Never disregard professional medical advice or delay in seeking it because of something you have read, heard or seen in the webinar.**



## Brighton Baby by Dr. Roy Dittman



**A Revolutionary Organic Approach  
to Having an Extraordinary Child  
The Complete Guide to Preconception and Conception**

The first comprehensive method for preventing birth defects and autism, and supporting natural fertility.

### **The Brighton Method**

- ✓ Addresses methylation pathway & mitochondrial deficiencies
- ✓ Defines epigenetic perinatal nutrition
- ✓ Stresses the importance of eliminating heavy metals & environment toxins before conception

***Dr. Dittman provides older couples with a roadmap for reducing their biological age so that they can safely conceive an extraordinary child! His groundbreaking theories on health and disease are sure to turn heads, stir controversy, and bring more awareness to the impact of our environment on gene expression and therefore the health of future generations."***

***- William Andrews, Ph.D., founder of Sierra Sciences, & discoverer of telomerase***

## Lead Exposure on the Rise Despite Decline in Poisoning Cases

By Mark Fischetti – Feb 17, 2013

Leaded gasoline and lead paint are gone, but other sources are keeping the danger high. Lead is still present in drinking water in many communities, where it can leach from lead pipes in homes, apartment buildings and municipal water system, or from brass fittings or solder used in plumbing.

Another 25,000 to 30,000 tons of lead enters the U.S. environment each year from hunting and shooting-range ammunition, fishing-line weights, discarded batteries and electronic waste, said Mark Pokras at Tufts University.

**Coal-burning power plants** in developed nations also generate some lead in emissions and more so in ash, and the steep rise in coal power in **China has boosted levels worldwide because regulations are more lax.**

Larger lead particles fall to the ground within about 200 meters of the source (including tailpipes), but the smaller particles, about 0.5 micron in size, can remain airborne for a week before they settle out. According to Flegal, **lead particles from China have been found in rainfall in Santa Cruz, Calif.**



*a coal-fired power plant in Dadong, Shanxi province*

# Fluoride Increases Heavy Metal Accumulation in Your Body

<http://www.youtube.com/watch?v=dKrcmOTmhxo>

YouTube



Studies confirm that hydrofluorosilicic acid increases lead accumulation in bone, teeth, and other calcium-rich tissues.

The free fluoride ion actually acts as a *transport* of heavy metals, allowing them to enter into areas of your body they normally would not be able to go, such as into your brain.

***Fluoride is... the most aggressive seeker of another electron. It's the most electromagnetically negatively charged element in the entire world.***

***"There is a current and growing body of peer reviewed scientific publications showing that fluoridated water causes gene damage leading to birth defects and cancer and that humans are genetically different in their sensitivity to levels of fluoride in their drinking water. "...***

Dr. Daniel Beilin



**Hidden Causes  
Revealed Through  
Dynamic  
Regulation  
Thermography**

Dr. Garry Gordon



**NO Sex, NO  
Life, NO Fun**

Dr. Damon Miller



**Hope for Sight:  
Understanding the  
Role of Epigenetics  
in Reversing  
Degenerative Retinal  
Diseases**

Dr. Leigh Erin Connealy



**Solving "Last-  
Resort" Cases: A  
Review of Case  
Studies**

Dr. Janet Hranicky



**The Power of  
the Mind in  
Getting Well**

Dr. Simona Pop



**Cancer and  
Dental Heavy  
Metals & Lasers**

Dr. W. Lee Cowden



**Hope For The  
"Incurable"- What  
the Evidence  
Shows**

Dr. Dietrich Klinghardt



**Integrative  
medicine**

Dr. David Steenblock



**Stem Cell Growth  
Factors are the  
Real Miracles**

Dr Amy Derkson



**Crucial Support  
for any  
Integrative  
Protocol**

Dr. Shiu Yin Lo



**Evidence Stable-  
Water-Clusters at  
room temp and its  
effect on health**

Dr. Toby Watkinson



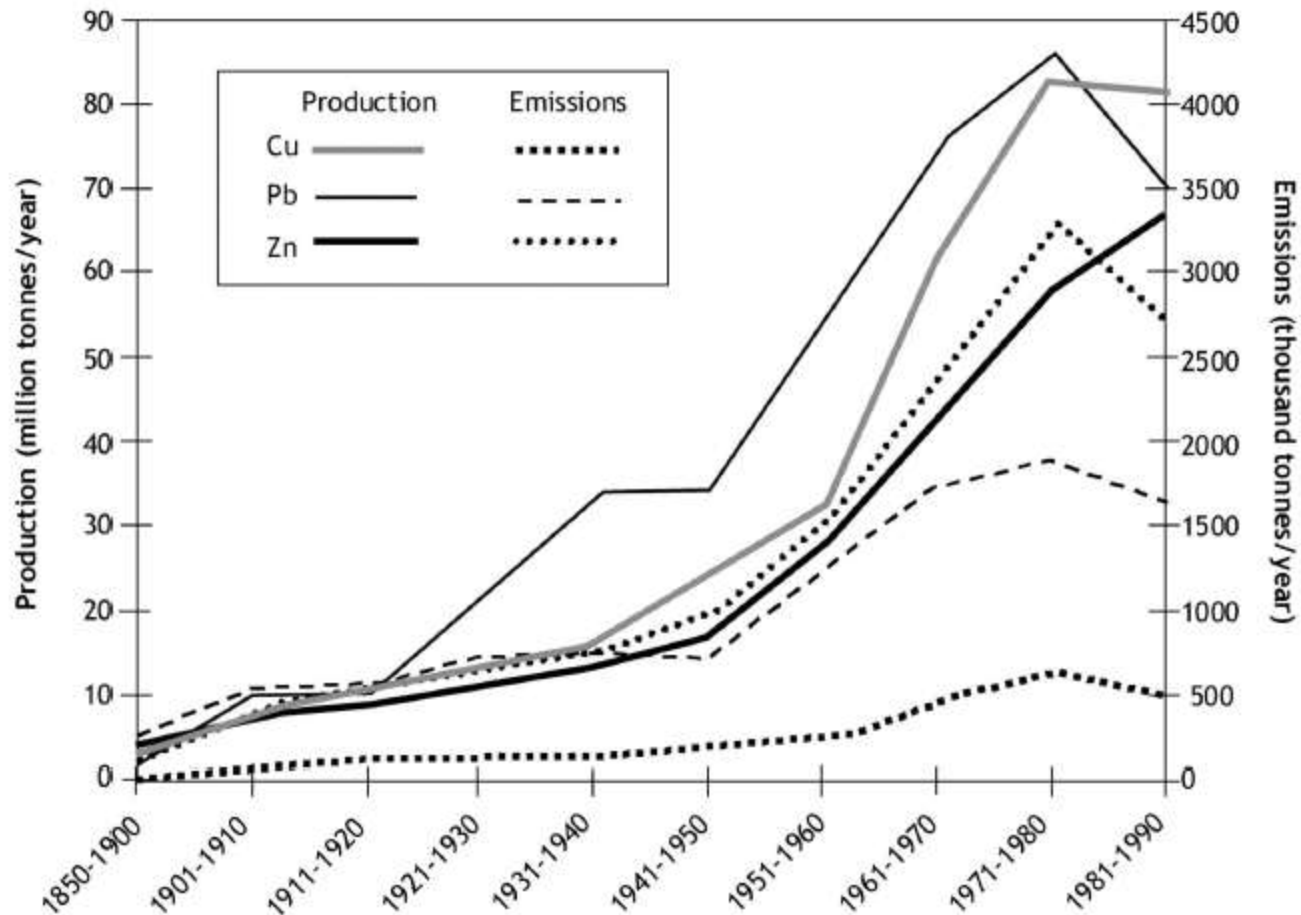
**Body Electric-  
a Gateway to  
Healing**

[popsdrdr@yahoo.com](mailto:popsdrdr@yahoo.com)  
[www.ecc-europa.eu](http://www.ecc-europa.eu)

# Cancer, Dental Heavy Metal & Lasers

Prof. DrDr Simona Pop  
ECC Medical Care -Vienna  
02/21-24/2013  
Long Beach USA

## Global production and consumption of selected toxic metals, 1850–1990.



Järup L Br Med Bull 2003;68:167-182



# NO SAFE LEVEL OF LEAD

- Blood lead levels and mortality Archives of Internal Medicine (AMA Official Journal)
- 2002 Nov 25;162(21 ):2443-9
- Lustberg M, Silbergeld E. Department of Epidemiology and Preventive Medicine, University of Maryland
- Despite declines in blood lead levels during the past 20 years, lead exposure continues to be a public health concern. Studies have linked lead exposure with increased risk for diverse health outcomes. Few studies have evaluated the association of lead exposure and mortality in the general population.
- METHODS: To evaluate the association of lead exposure and mortality in the United States, we used the recently released mortality follow-up data for participants of the Second National Health and Nutrition Examination Survey, a national cross-sectional survey of the general population conducted from 1976 to 1980. Survey participants aged 30 to 74 years with blood lead measurements were followed up through December 31, 1992 (n = 4292).
- RESULTS: After adjustment for potential confounders, individuals with baseline blood lead levels of 20 to 29 microg/dL (1.0-1.4 micromol/L) had
  - **46% increased all-cause mortality** (RR, 1.46; 95% confidence interval [CI], 1.14-1.86),
  - **39% increased circulatory mortality** (RR, 1.39; 95% CI, 1.01-1.91), and
  - **68% increased cancer mortality** (RR, 1.68; 95% CI, 1.02-2.78)
- compared with those with blood lead levels of less than 10 microg/dL (<0.5 micromol/L).

## Synergistic effects of toxic metals (**mercury, lead, aluminium**) are extreme.

Bernard Windham, M.D.

- Mercury and lead are extremely **neurotoxic** and **cytotoxic**, but their combined synergistic effect is much worse.
- A dose of mercury sufficient to kill 1% of tested rats, when combined with a dose of lead sufficient to kill less than 1% of rats, resulted in killing 100% of rats tested(1). Thus with combined exposure the safe dose is 1/100 as much as the dose individually.
- Studies in Australia have confirmed similar relationships hold for people. This means most people in the U.S. are getting dangerous levels of these metals, enough to cause some neurologic effects.
  
- (1) Schubert J, Riley EJ, Tyler SA. Combined effects in toxicology. A rapid systematic testing procedure: cadmium, mercury, and lead. Toxicol Environ Health 1978;4(5/6):763-776.

# Metals in dental alloys

- Beryllium
- Cadmium
- Chromium
- Cobalt
- Copper
- Gallium
- Gold
- Iridium
- Indium
- Manganum
- Mercury
- Molybdenum
- Nickel
- Palladium
- Platinum
- Silver
- Tin
- Titanium
- Vanadium
- Zinc
- Etc. etc.

# Heavy Metal in Dentistry

- Dental fillings : Amalgam
- Prosthodontics: Crowns & Bridges
- Orthodontics: Brackets / Wires
- Implants

# Dental amalgam

50% Mercury

50%

Silver~22-32 %

Tin ~14%

Copper~8%

Chromium

Zinc

Nickel

Palladium

# Mercury in dental amalgam: The WHO report

- For the last 180 years, dental amalgam (containing 50% liquid mercury) has been the most widely used filling material, although since the introduction of composite resins in the 1970s, its use has declined slightly.
- The WHO report acknowledges that amalgam has been associated with general health concerns and that its use releases a significant amount of mercury into the environment.
- The report estimates that mercury contamination of the environment from the use of dental amalgam contributes between 260 and 340 tons of mercury per annum of which the majority contaminates the atmosphere and the soil.

# Mercury in dental amalgam

## United States of America:

- Dental amalgam has been widely used in the US for about 150 years.
- FDA was first given authority to regulate medical devices in 1976.
- in 2009 the FDA convened a panel to investigate the issue of amalgam safety and made several recommendations: “FDA recommends that the product labelling includes a warning against the use of dental amalgam in patients with **mercury allergy**”
- Also, “If you are allergic to any of the metals in dental amalgam, **you should discuss amalgam replacement with your dentist.**”

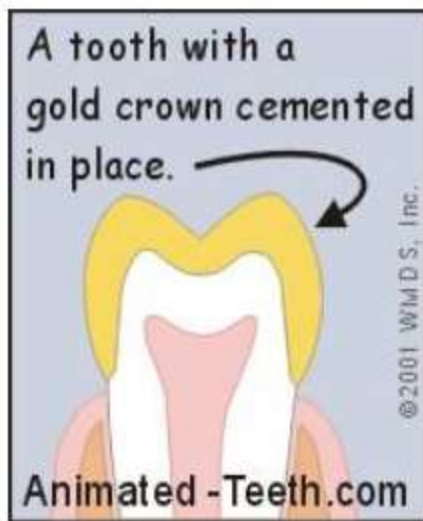
# Mercury in dental amalgam

## **Europe:**

- the 47 nations of the Council of Europe have passed a resolution calling for member nations to start 'restricting or prohibiting the use of amalgams as dental fillings'.
- Several member countries have introduced phasing-out or phasing-down policies including Sweden, Denmark, Netherlands, Finland, Germany, and Austria.
- Some countries such as Denmark, Sweden and Germany require by law amalgam separators to be fitted in dentists' offices.



# Crowns and Bridges



According to the [American Dental Association](#),

- full gold crown alloys can only be labeled as *high noble* when they contain: at least 60% noble metal, of which at least 40% must be [gold](#), and 20% [platinum](#), [palladium](#), [silver](#), [copper](#) and [tin](#)
- other alloys (for example, [palladium](#))
- or a base-metal alloy (for example, [nickel](#), [chromium or cobalt](#) ).

# Dental Brackets/Braces Alloy



## Types of braces:

- *Traditional metal wired braces* are **stainless steel**, sometimes in combination with titanium, and are the most widely used
- **Gold-plated stainless steel** braces are often employed for patients allergic to nickel
- **Titanium braces** resemble stainless steel braces but are lighter and just as strong. People with allergies to the nickel in steel often choose titanium braces,
- **Nickel-titanium** alloys,
- **Cobalt-chromium-nickel** alloys,
- **Beta-titanium alloys** etc. are used in the treatment of malocclusion

T.P. Chaturvedi, BDS, MDS, The Orthodontic CYBERjurnal, January, 2008

# Dental Wires Alloy

Different Types of Wires Used for Orthodontic treatment and their composition:

1. **Au (gold) alloys:** 15-65% Au, 11-18 Cu, 10-25% Ag, 5-10 % Pd
2. **Stainless steel:** 71% Fe, 18% Cr, 0.8%Ni, C less than 0.2%
3. **Cr-Co alloys:** 40% Co, 20%Cr, 15%Ni, 15.4%Fe, 0.7%Mo, 0.2%Mn, 0.4% Br, 0.05% other
4. **Ni-Ti alloys:** 54-55% Ni, 43-44% Ti, 1.6-3% Co
5. **Cu-Ni-Ti alloys:** 43% Ti, 50%Ni, 05%Cr, 6.5% Cu
6. **Beta-Ti alloys:** 78%Ti, 11% Mo, 0.6Zr, 0.4Sn

# BODY IMPLANTS



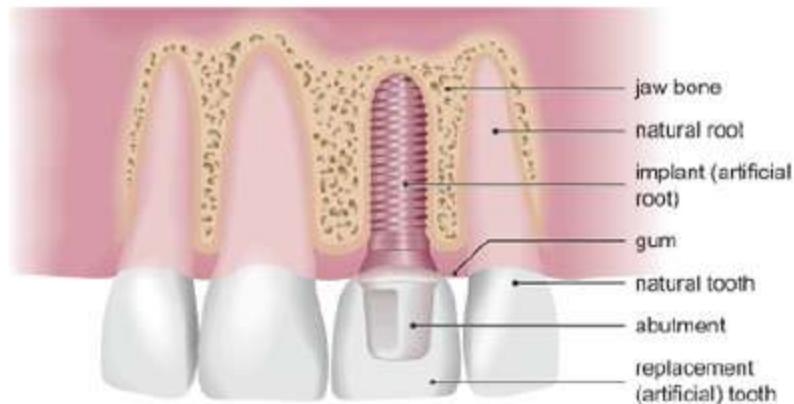
**Alloys** which can be used in implants are:

**Cobalt-chromium**

**Titanium Alloys**

**Stainless Steel**

**Tantalum**



A dental implant

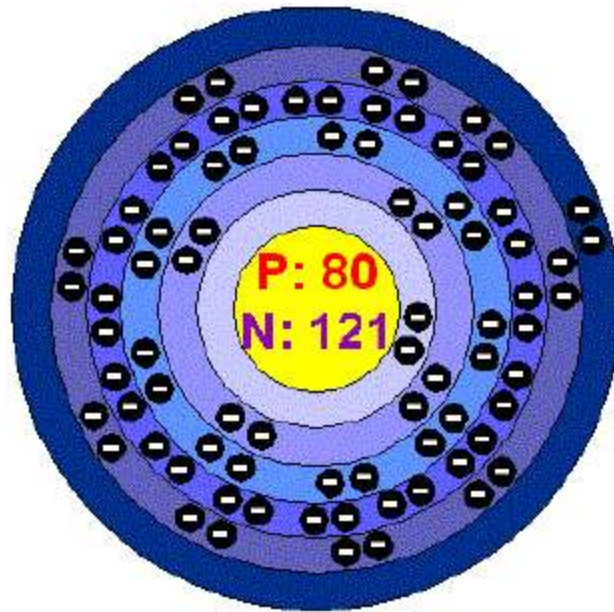
# Titanium Alloys

Titanium alloys are obtained by alloying titanium with the following elements (the numbers in parentheses representing the maximum percentage concentration by weight for industrial alloys):

- Ni (32),
- Mo (30),
- V (16),
- Sn (13),
- Zr (10), Cr (10),
- Al (8), Mn (8),
- Fe (5), W (5),
- Cu (3), and Si (0.5);
- the use of Nb (2) and Ta (5) is less common.
- Small amounts of Pd (0.2) and B (0.01) are added in order to, respectively, improve corrosion resistance and reduce grain size.

**Titanium Alloys in Surgical Implants-** Hugh A. Luckey, Fred Kubli, Jr.  
ASTM International, 1983

# Metals cause allergy and autoimmunity



metals																		nonmetals									
transition metals																											
1 H 1.008																	2 He 4.002										
3 Li 6.941	4 Be 9.012																	5 B 10.81	6 C 12.011	7 N 14.007	8 O 16.000	9 F 18.998	10 Ne 20.180				
11 Na 22.990	12 Mg 24.305																	13 Al 26.982	14 Si 28.086	15 P 30.974	16 S 32.06	17 Cl 35.453	18 Ar 39.948				
19 K 39.098	20 Ca 40.078	21 Sc 44.956	22 Ti 47.88	23 V 50.942	24 Cr 52.00	25 Mn 54.938	26 Fe 55.845	27 Co 58.933	28 Ni 58.693	29 Cu 63.546	30 Zn 65.38	31 Ga 69.723	32 Ge 72.64	33 As 74.922	34 Se 78.96	35 Br 79.904	36 Kr 83.80										
37 Rb 85.468	38 Sr 87.62	39 Y 88.906	40 Zr 91.224	41 Nb 92.906	42 Mo 95.94	43 Tc 98.906	44 Ru 101.07	45 Rh 102.905	46 Pd 106.36	47 Ag 107.868	48 Cd 112.411	49 In 114.818	50 Sn 118.710	51 Sb 121.757	52 Te 127.6	53 I 126.905	54 Xe 131.29										
55 Cs 132.905	56 Ba 137.327	57 La 138.905	58 Ce 140.12	59 Pr 140.908	60 Nd 144.24	61 Pm 144.913	62 Sm 150.36	63 Eu 151.964	64 Gd 157.25	65 Tb 158.925	66 Dy 162.50	67 Ho 164.930	68 Er 167.259	69 Tm 168.933	70 Yb 173.054	71 Lu 174.967											
87 Fr [223]	88 Ra [226]	89 Ac [227]	104 Unq [261]	105 Unq [262]	106 Unq [263]	107 Unq [264]	108 Unq [265]	109 Unq [266]	110 Unq [267]	111 Unq [268]	112 Unq [269]																
72 Hf 178.49	73 Ta 180.948	74 W 183.84	75 Re 186.207	76 Os 190.23	77 Ir 192.222	78 Pt 195.084	79 Au 196.967	80 Hg 200.59	81 Tl 204.384	82 Pb 207.2	83 Bi 208.980	84 Po [209]	85 At [210]	86 Rn [222]													
90 Th 232.038	91 Pa 231.036	92 U 238.029	93 Np 237.048	94 Pu 244.064	95 Am 243.061	96 Cm 247.070	97 Bk 247.070	98 Cf 251.08	99 Es 252.083	100 Fm 257.10	101 Md [258]	102 No [259]	103 Lr [260]														

**Mercury is potent allergen**

Transition metals used in dentistry bind strongly to proteins and thus are immunologically active

# Side-effects of heavy & transition metals

## Toxic effects

- higher doses
- single exposure
- low specificity
- low genetic influence

## Immunologic effects

- low doses
- chronic exposure
- high specificity
- high genetic influence

**Allergy**

**Autoimmunity**

## Increased reactivity to metals have been found in the following diseases:

- **Cancer**
- Multiple Sclerosis
- Chronic Fatigue Syndrome
- Rheumatoid Arthritis
- Crohn's Disease
- Unexplained food allergies
- Fibromyalgia
- "Amalgam poisoning"
- Amyotrophic Lateral Sclerosis
- Lupus Erythematosus
- Oral Lichen Planus
- Oral burning and itching
- Skin diseases such as eczema or psoriasis
- Sjögren's syndrome
- Autistic disorders
- Multiple Chemical Sensitivity



# Ovarian Carcinoma

- the incidence of ovarian cancer, from 1973 to 1999, in white females over 65 has increased by 21%,
- The American Cancer Society estimates that in 2012, about 22,280 new cases of ovarian cancer will be diagnosed and 15,500 women will die of ovarian cancer in the United States

Surveillance, Epidemiology and End Results (SEER)  
Program of the National Cancer Institute

# Prostate Cancer

- is the most commonly diagnosed cancer in men in the US.
- Over 300,000 new prostate cancer cases are diagnosed annually, constituting about 30% of all new male cancer cases,
- more than 40,000 men die from the disease each year

American Cancer Society

## Criteria of research

Thirty people took part in the study:

- Ovarian Carcinoma, 19 women (24 -60 yrs)  
( CA-125 > 35 U/ml, Stage II, III, )
- Prostate cancer, 11 men, (27-55 yrs)  
( PSA 10 – 28 ng/ml)

# Criteria of research

- All patients had undergone minimum one conventional treatment during a period of 10 to 25 years.
- The conventional treatment was unsatisfactory, some patients had had metastasis 0.5-3 years prior to the study.

# Criteria of research

- All the patients have been given vaccines in the past, had amalgam fillings, had prosthodontic treatment , orthodontic appliances or implants.
- At the time of the study, all the patients had complete dental metal replacement.
- All the patients had the Melisa test and the most positive responses were to: mercury, gold, platinum, palladium, silver, copper, titanium, tin, nickel, chromium, cobalt, cadmium, manganese, and thimerosal.

## Criteria of research

- During the heavy metal detox treatments, from the total of 30 patients
- Half were in the control group without laser treatments,
- The other half were exposed to laser therapy (SLBP) one or more sessions.

# Treatment

- All the patients in both groups were treated with detox treatment:
  - DMSA,
  - Vitamin C,
  - Glutathione,
  - Na Selenite
  - Mineral and Vitamin supplements.
- Half of them receive the laser therapy

# Laser Therapy

- The treatment course consisted of 22 exposures distributed over 5 ½ weeks. There were four sessions per week.
- Another 22 sessions over 4 weeks were offered to patients who received the first course but showed minimal improvement after the first course.
- Ten patients completed the second course of 22 laser treatments



# Laser Therapy

- The preliminary data show that increasing the number of laser sessions from 22 to 44 sessions did improve the efficacy of the treatments and resulted in total recovery in the majority of treated patients.

# Laser Specifications

- soft laser
- category 1 or lower
- penetrates up to 17 mm
- improves the energy supply of the cell by direct effect on ATP- production
- improves cell regeneration - photonic effects take place in the cellular field

# MELISA<sup>®</sup> method

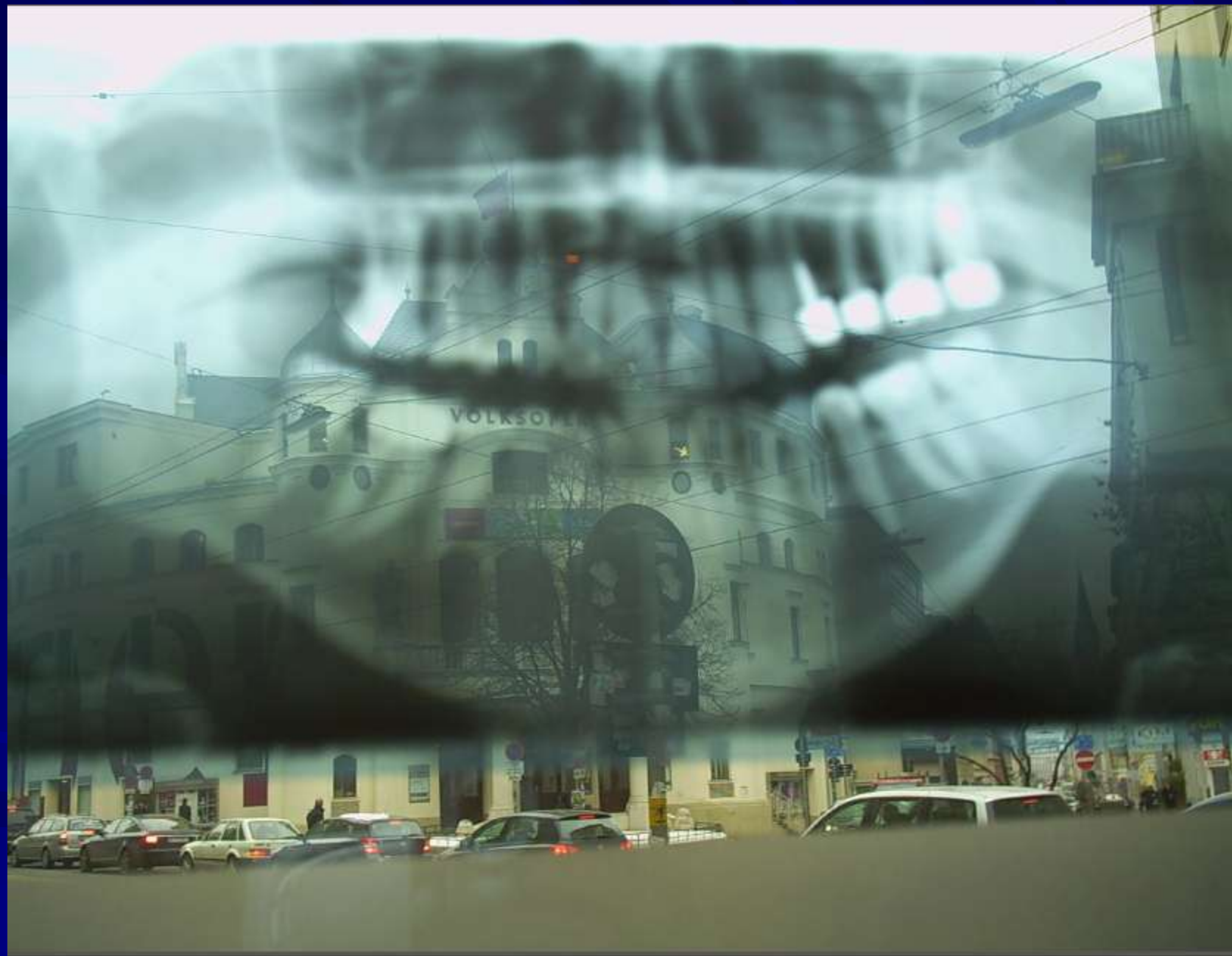
- Patient's white blood cells are exposed to the metallic allergens (the metals chosen for testing are determined by a Questionnaire of the patient's medical and dental history).
- Lymphocyte reactivity is measured by:
  1. Uptake of radioisotope by dividing lymphocytes
  2. Classical evaluation under microscope
- Results are produced as a value on a Stimulation Index together with a graph.

# Ovarian Carcinoma

- After the first 22 laser sessions, the group which received laser treatments showed reduction of CA-125 to  $< 35$  U/ml levels
- After second course of 22 laser sessions, there was decrease in metastasis and increased quality of life.
- Control group showed minimal improvement immediately after the detox treatments.
- At the follow-up performed at 12 months, great recovery was observed in the group which received laser therapy
- The group which did not receive laser treatments, showed minimal reduction of CA-125 U/ml level , after the non-laser detox treatments only

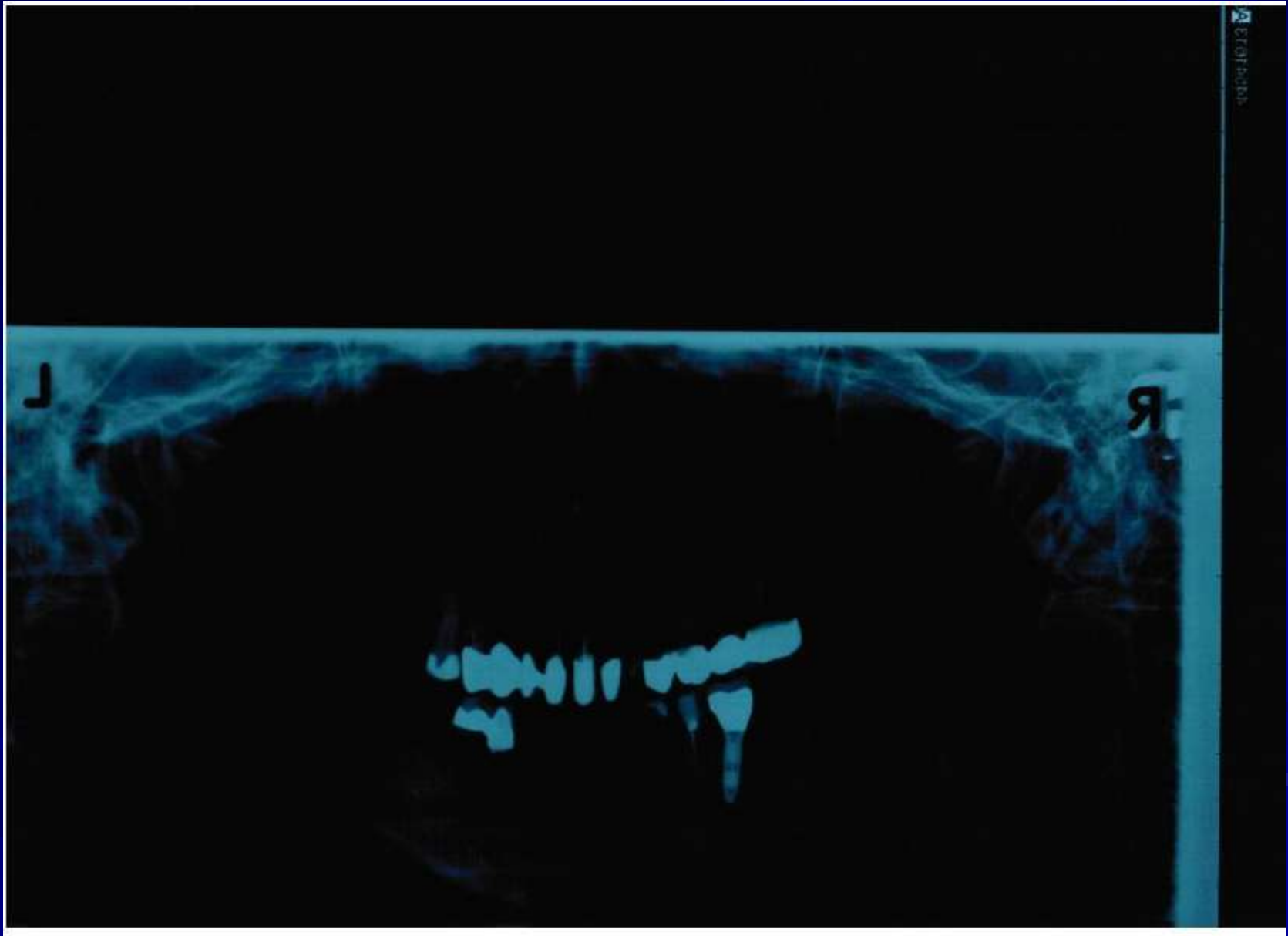
# Prostate Cancer

- Group which received the first 22 laser treatments showed reduction of PSA levels (PSA < 4).
- After the additional 22 laser therapy sessions, total normalization of PSA observed (PSA < 0.01)
- Control group which did not receive laser treatments, showed reduction of PSA as well (PSA < 8) after the non-laser detox treatments
- Follow-up 12 mo later: the PSA in the Control group varied between 4 and 6



# Summary of case 1

- Patient CK, female, 43 yrs old
- CA-125 > 35 U/ml, psychiatric problems, anxiety, depression
- Dental status: Amalgam fillings, crowns, root fillings with brass screws and had braces over 3 yr
- MELISA : Hg +++, Ni +++, Cr ++, Co ++ , Au ++
- Treatment: replacement of all metals, detox, laser therapy, Ni-free diet
- Outcome: psychiatric problems disappeared permanently, CA-125 < 35,





## Summary of case 2

- Patient TT, male 37 yrs old
- CFS, digestive problems, gluten intolerance, PSA 16 ng/mL
- Dental status: crowns, bridges, Ti implant
- Patch test: negative
- MELISA: Nickel +, Hg ++, Pb ++ Au ++  
Tin +, Methyl Hg+, Phenyl Hg+
- Treatment: Removal of crowns, bridges Ti-implant, and tattoo, detox and laser therapy, avoidance of nickel-rich food
- Outcome : total improvement of health, PSA 1.5 ng/ml

## Summary of case 3

- Patient W, Female 45 yrs old, police officer
- Ovarian Ca, CA-125= 120, fatigue, endocrine problems
- Dental status: 11 amalgam fillings, 2 Au crowns
- Patch test: Nickel +
- MELISA: Nickel +++, Hg ++, Cr ++, Co ++, Cu +
- Ti +, Methyl Hg+, Phenyl Hg+
- Treatment: Removal of crowns and amalgam fillings, detox and laser therapy, avoidance of nickel-rich food
- Outcome: Relocation to administration for 1 yr, improved health, down-regulation of metal-specific lymphocyte reactivity

# Summary of case 4

- Patient PA, female, 55 yrs old
- Gingivitis, skin disease, depression, Ovarian Ca, CA-125= 89
- Dental status: crowns, root fillings with brass screws
- Patch test: Ni +
- MELISA : Ni +, Cr ++, Co ++ , Be ++, Cd ++, Bi ++
- Treatment: replacement of all metals, detox, laser therapy
- Outcome: oral and psychiatric problems disappeared permanently, decrease of skin problems, CA-125= 25

# Summary of case 5



Corrosion  
particles  
from a metal  
implant

Patient MH male 42 yrs old

Symptoms:

fatigue

severe depression!

decreased mental capacity

prostata Ca ( PSA 16 ng/mL )

Dental status:

4-Ti- implants

6- gold crowns

4- Ti screws in spine

# Summary of case 5

## Treatment:

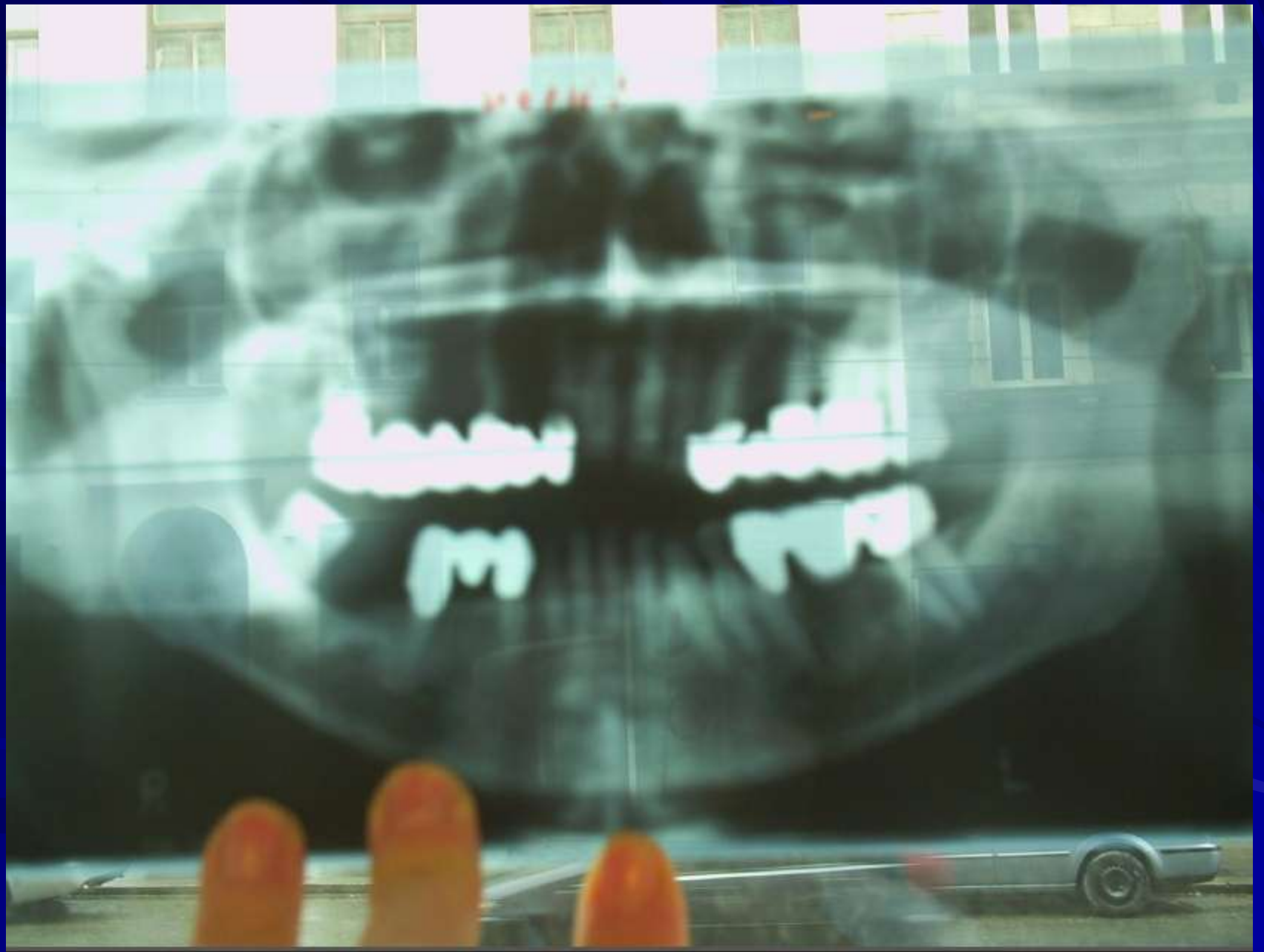
Remove Ti implants and Au crowns,  
Remove Ti screws (2 corroded!)

## Results after 6 months:

Clinical: significantly improved  
MELISA: reactivities normalized  
PSA: 2.5 ng/ml

# Summary of case 6

- Patient OH. Male, 46 yrs old, farmer
- CFS, atypical dermatitis, lung capacity (28%),  
PSA 24ng/mL
- Dental status: 2 amalgams, 3 gold crowns, 5 root fillings
- Patch test Negative
- MELISA: Bi +++, Mo ++, Cd ++, Hg+, PhHg+, Ni ++, Au +
- Treatment: Replacement of metals with metal-free restorations, detox and laser therapy
- Outcome: successive health improvement (2 yrs later) and of lung capacity ( 82%), PSA 0.01 ng/ml



## Summary of case 7

- Patient MB. Male, 57 yrs old
- CFS, atypical dermatitis, PSA 16 ng/mL
- Dental status: 5 amalgams, gold crowns, root fillings,
- Patch test: Negative
- MELISA: Ag ++, Al ++, Pd ++, Hg+, PhHg+, Ni ++, Au +, Cd ++, Bi +
- Treatment: Replacement of metals with metal-free restorations, detox and laser therapy
- Outcome: successive health improvement (1.5 yrs later) skin problems disappeared permanently, PSA 0.5

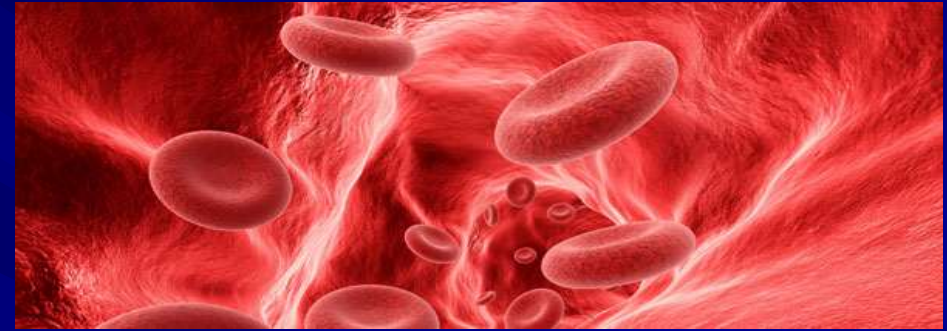


# Conclusions

- The health in all patients treated by dental metal replacement and detoxification improved .
- Patients who received laser treatments had faster recovery.
- Patients who received the additional 22 laser sessions had complete health recovery in a short time.

# Natural Healing with Intranasal Light Therapy

Intranasal Light Therapy is a way to stimulate self healing and boost immunity by illuminating the blood capillaries through the nasal cavity.



**Intranasal light therapy stimulates restoration of body balance (homeostasis).**

VieLight is a small light diode of certain specifications designed to be inserted into either nostril for 25 minutes per day. Homeostatic stimulation is achieved through the response of the mid-brain area, particularly the hypothalamus being in close proximity to the nasal cavity, and the stimulation of redox signaling molecules and their subsequent distribution through the nasal capillaries and the circulatory system.

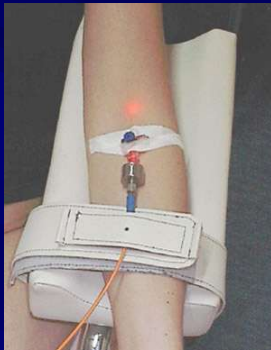


The facial area also responds directly to the light, often resulting in the immediate treatment of sinusitis, congestion, headache and, facial and pain in the neck area.

# History of Light Therapy and its Side Effects



**1967:**  
Hair growth in mice



**1986 to present:**  
Intravenous Blood  
Irradiation

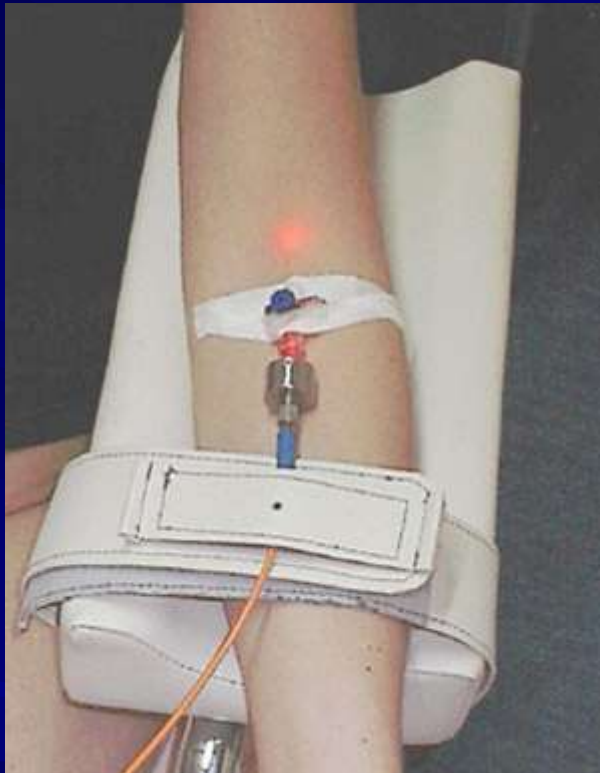


**1995 to present:**  
Intranasal Light  
Therapy



**3000+ clinical  
studies  
NO MAJOR  
SIDE EFFECTS**

# The mother: intravenous irradiation

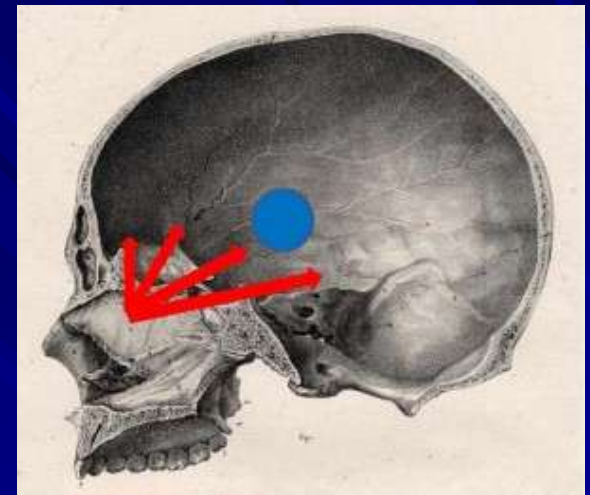


Parameters are based on  
**Blood irradiation**

# THE POTENTIAL OF INTRANASAL LIGHT THERAPY FOR BRAIN STIMULATION

By Lew Lim, MedicLights Research Inc., Toronto, Canada.  
January 2013

Evidence supports intranasal light therapy for brain-related conditions such as mild cognitive impairment, Parkinson's Disease, migraine, stroke.



We analyzed the literature to arrive at reference parameters for optimum brain stimulation with low level light. **Studies lead us to select parameters that involve low level light in the near infrared red (NIR) range that pulses at 10 Hz to draw superior neural response.**

More specifically, the parameters could include a **wavelength of 810 nm from a LED source, supported by a power density of 10 mW/cm<sup>2</sup>, over daily treatment session of 25 minutes, and a duty cycle of 50 percent.**

The LED beam footprint spans the underside of the brain, including the mid-brain area. With these specifications, the energy is 7.5 J/cm<sup>2</sup> (net of duty cycle) per session. Users reported improved neurological outcomes, although the results are more mixed (but without negative effects) from those without prior medical conditions.

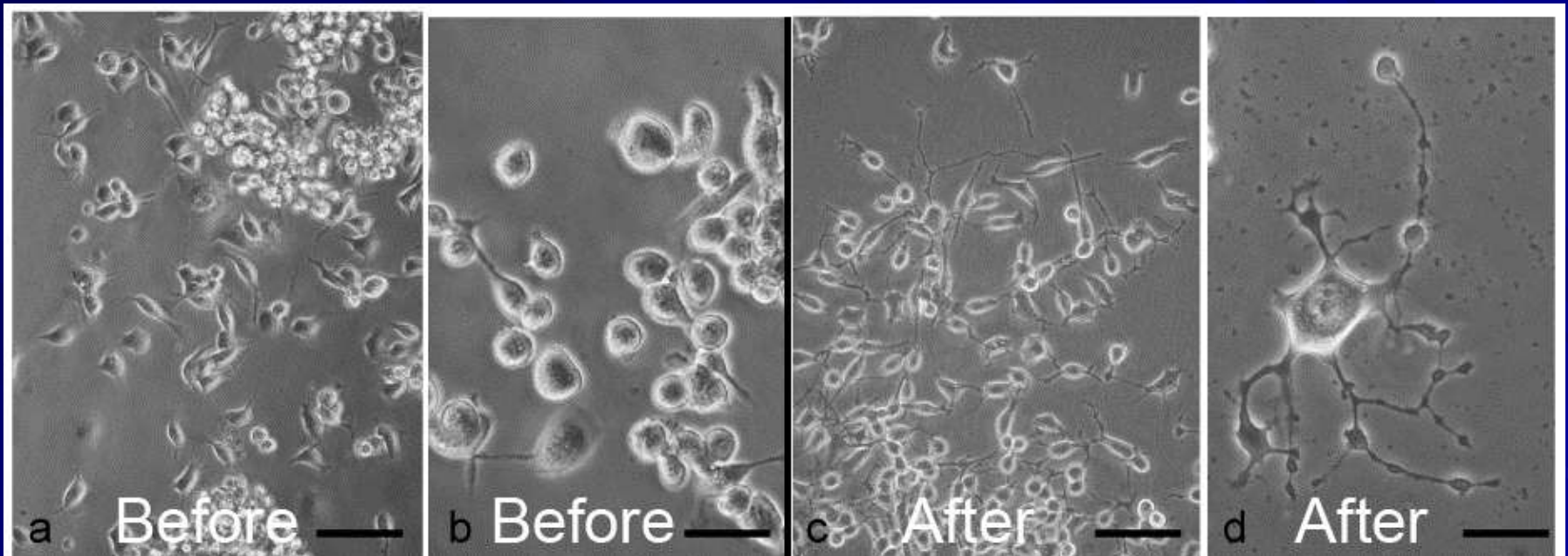
# Deep brain stimulation for Parkinson's

## - Example of effective alternative method



**It's  
about  
stimulation**

# Brain Cell Healing



In vitro post-oxidative stress. 670nm, 3 mW, 20 sec/day, 5 days

Source: Giuliani et al. Low infra red laser light irradiation on cultured neural cells: effects on mitochondria and cell viability after oxidative stress. BMC Com Alt Med 2009, 9:8.

# History of neurological evidence

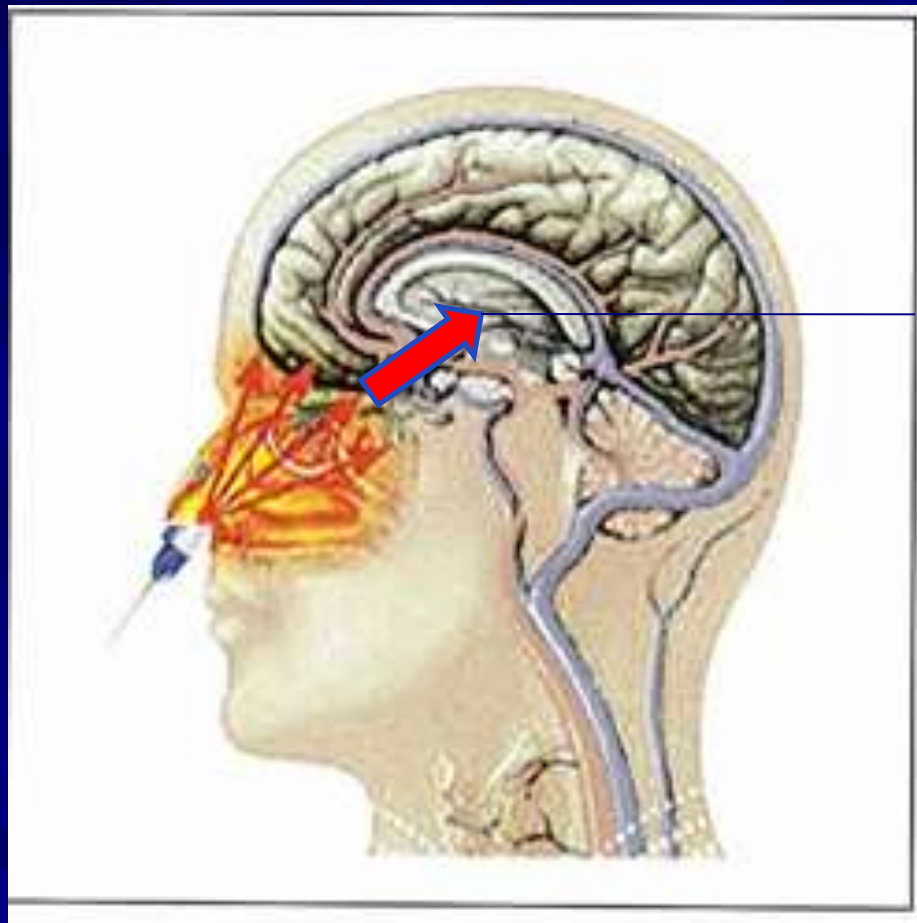
**With present Intranasal Low Level Laser Therapy parameters**

- Facial pain, 1998
- Intractable headache, 1998
- Cerebral thrombosis, 1999
- Parkinson's disease, 1999
- Alzheimer's disease, 1999
- Mild cognitive impairment, 2000
- Insomnia, 2001
- Post-stroke conditions, 2003
- Migraine, 2003
- Traumatic brain injury, 2003
- Schizophrenia, 2000
- Vascular dementia, 2005
- Cerebral palsy, 2007

***Can we still improve?***

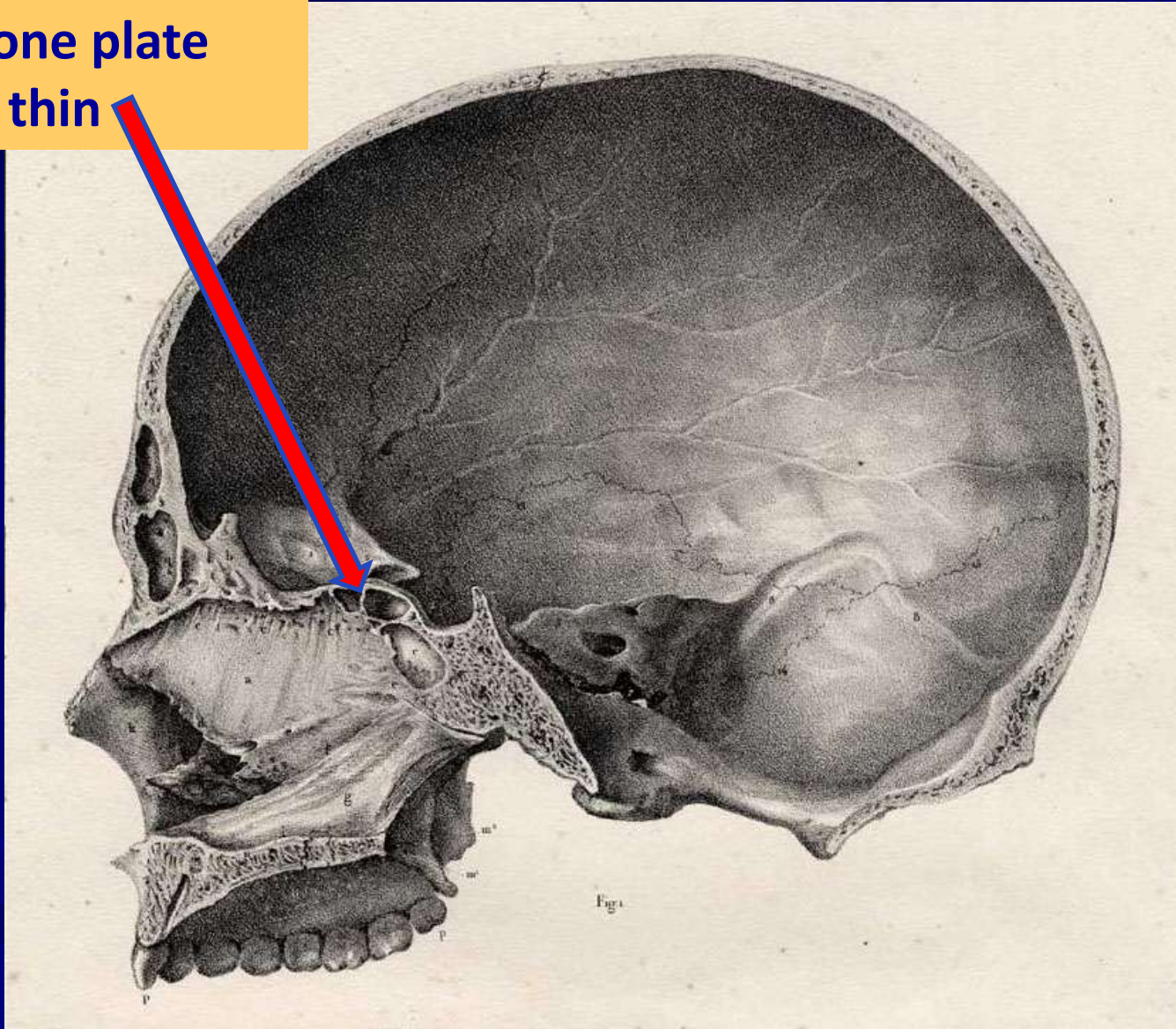


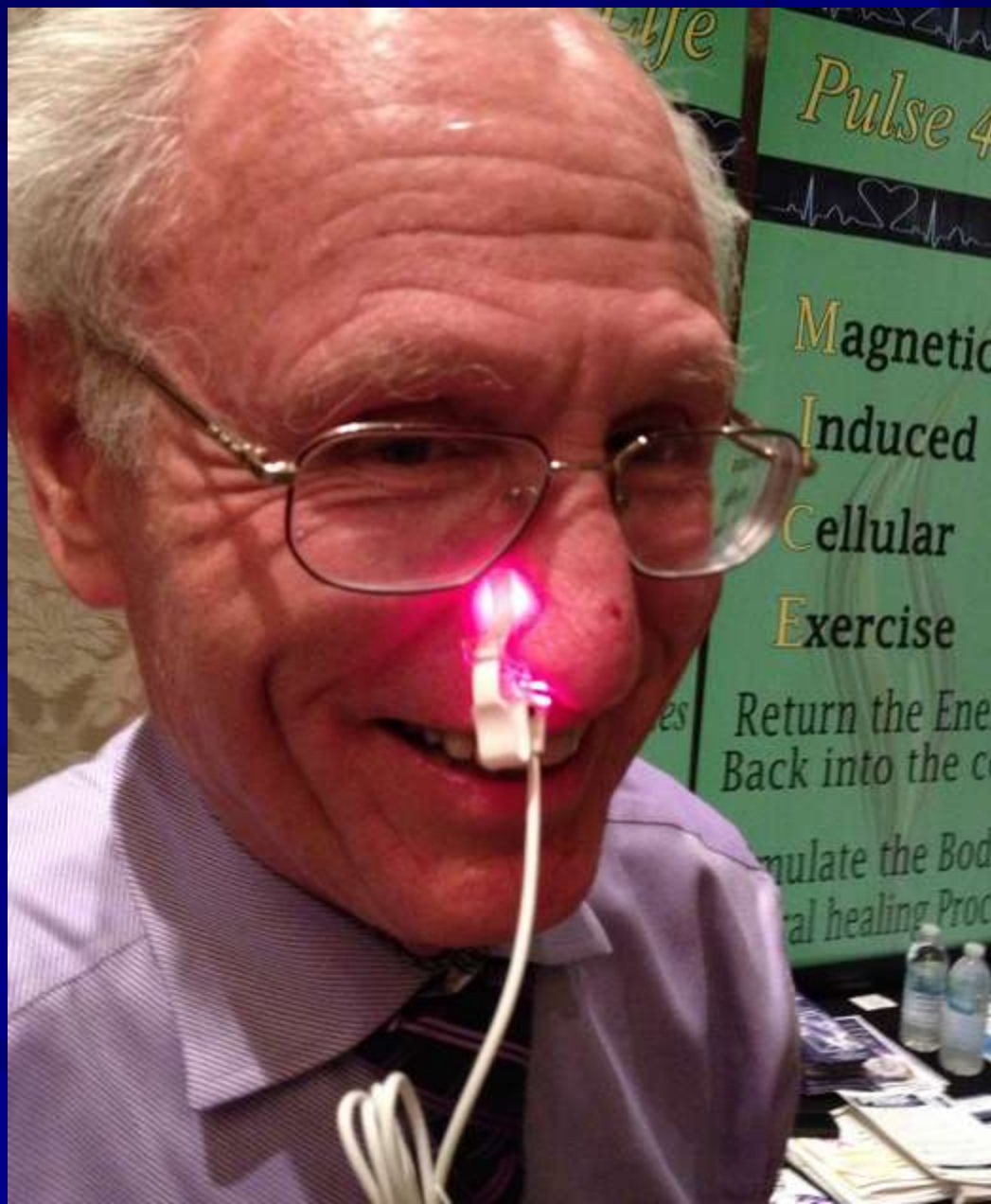
# Illuminating the Mid-brain



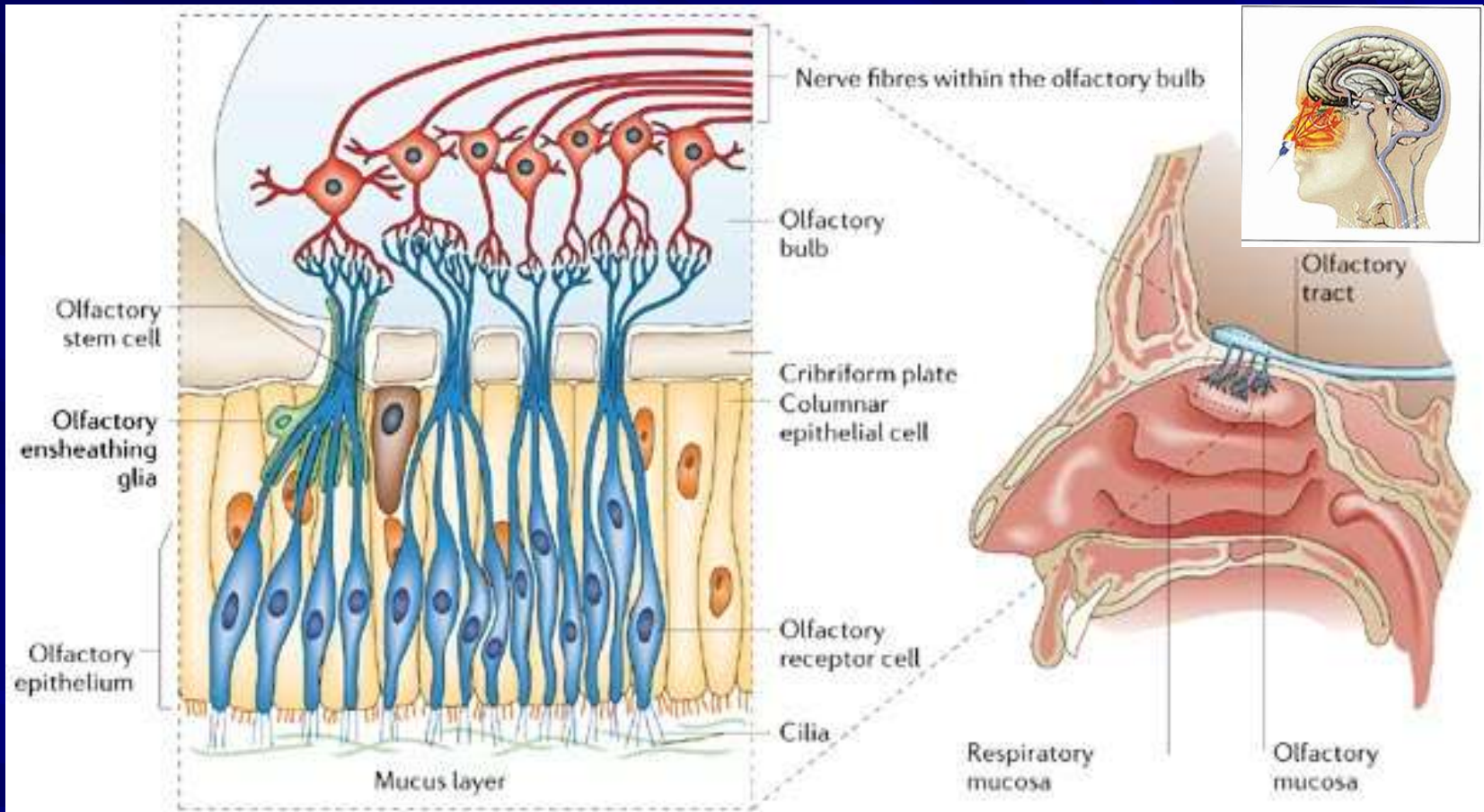
Hypothalamus

Thin ethmoid  
bone plate  
is thin

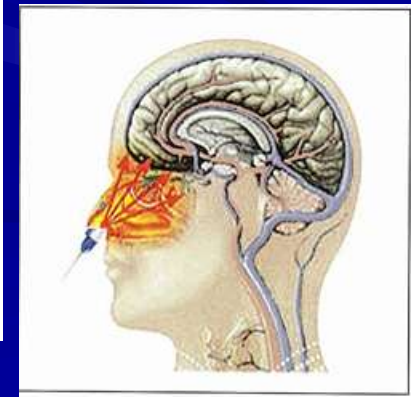
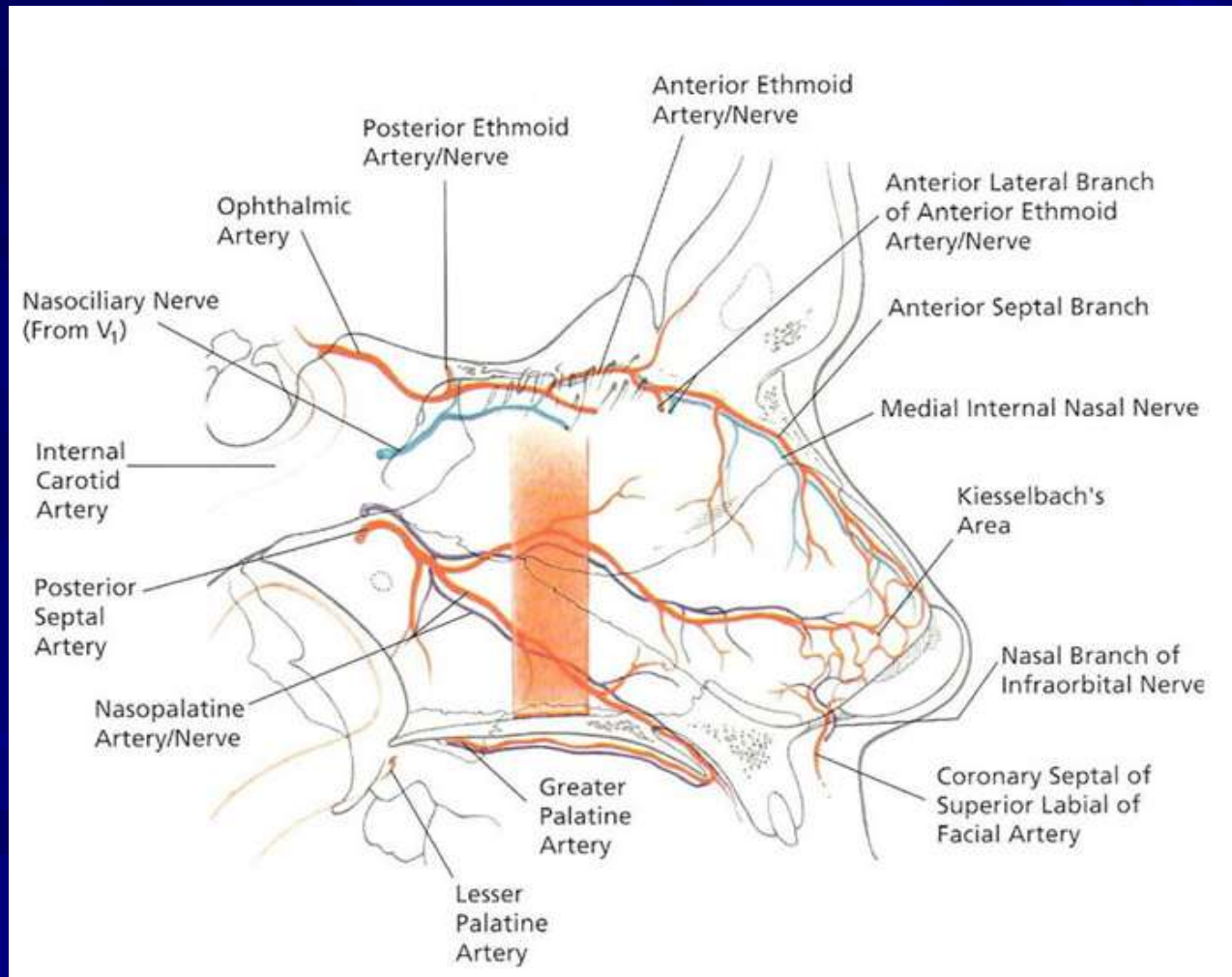




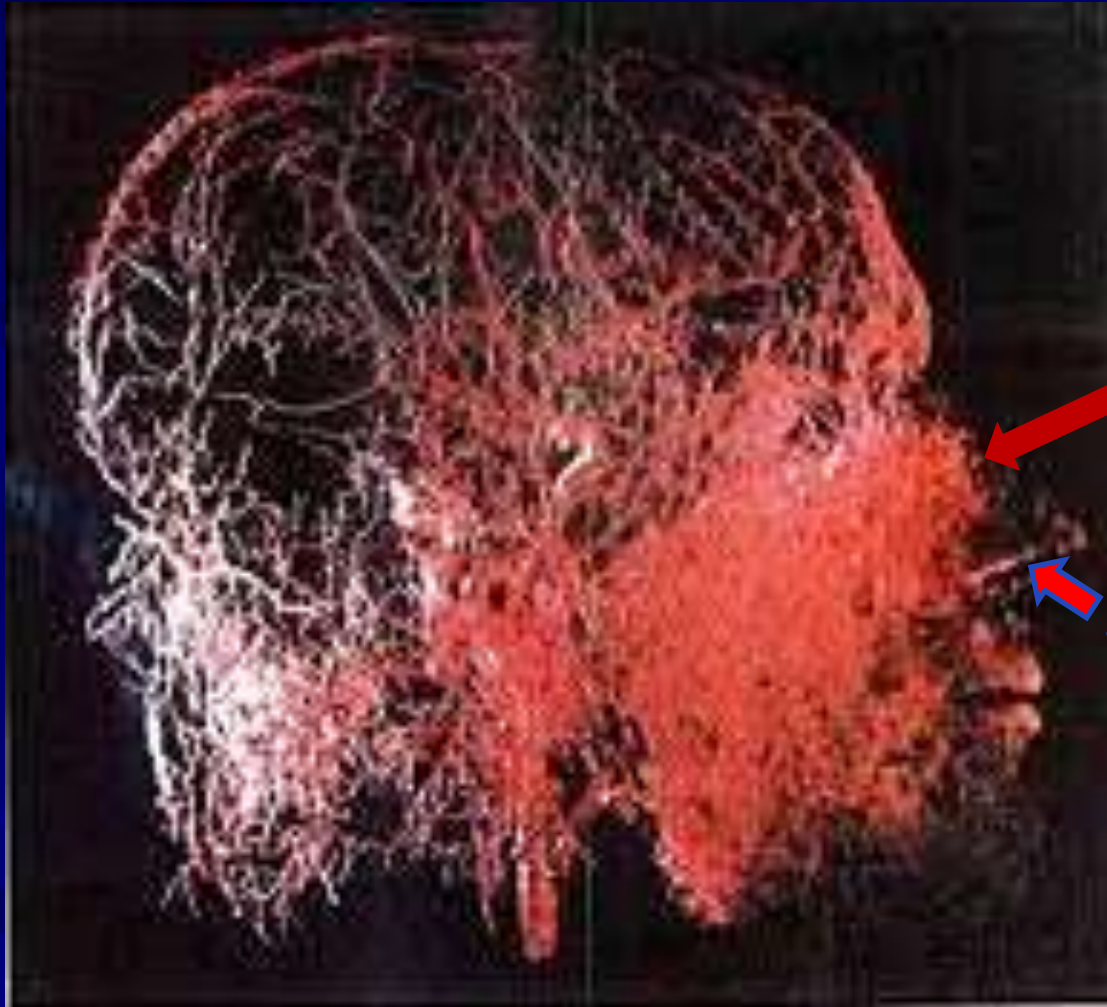
# ILIT Biomechanism: Olfaction



# ILIT Biomechanism: blood mediation

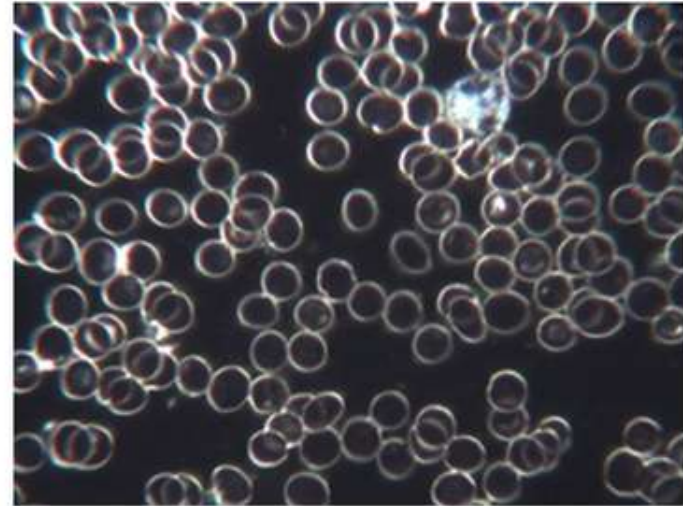
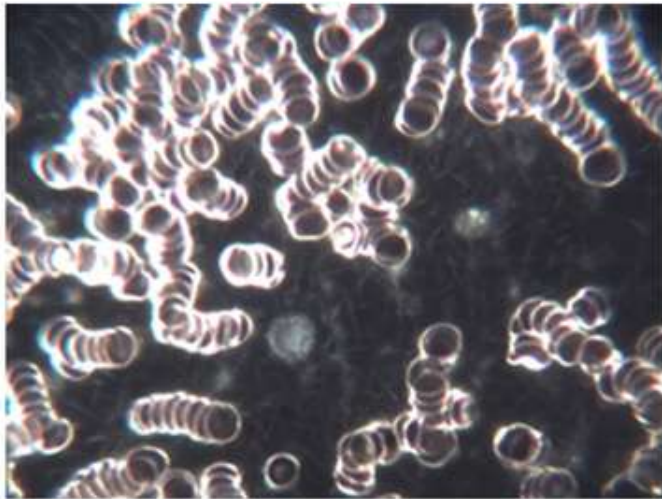


# Blood vessels of the Human Head

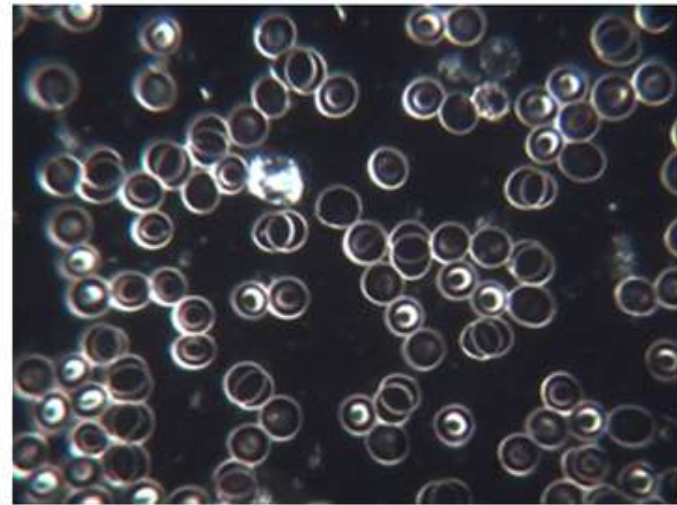
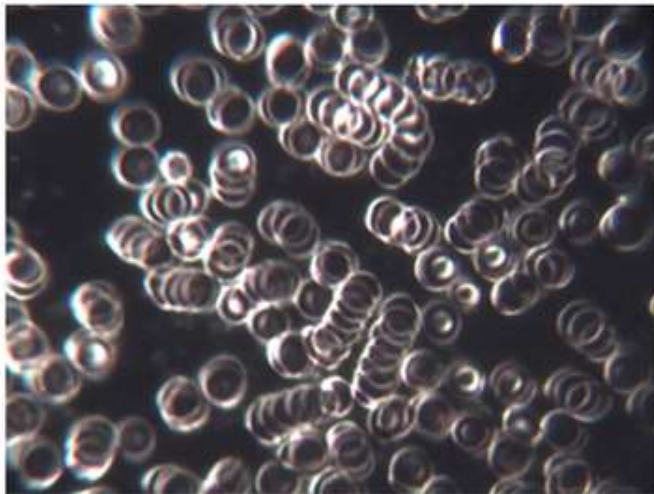


**The most concentrated area**

**Light source**



**Left before and after 25 minute use of the Vielight on the right notice the red blood cells on the left are stacked with poor amount of surface area available for the exchange of oxygen**



# Intranasal Low Intensity Laser Therapy (ILILT) blood purifying effects



ILILT



blood circulation and effects to whole body's blood



## ILILT's Biostimulatory effects to blood

1. Increased ATP production by the mitochondria and increased oxygen consumption on the cellular level, which may result in muscle relaxation
2. Increased serotonin and increased endorphins
3. Increased anti-inflammatory effects through reduced prostaglandin synthesis
4. Improved blood circulation to the skin in cases like neuralgia and diabetes mellitus
5. Decreases permeability of the membrane of the nerve cells for Na/K causing hyperpolarisation
6. Increased lymphatic flow and decreased edema

## Adjuvant therapy

## Health care

- **Hypertension** <<Learn more
- **Hyperlipoidemia** <<Learn more
- **Hyperviscosity** <<Learn more
- **Stroke** <<Learn more
- **Sugar diabetes** << Learn more
- **Insomnia** << Learn more
- Blood health care
- Improve natural immunity
- Anti-ageing
- protect the ischemic anemia



## Healing Distributed through the Circulatory System

The combined roles of singlet oxygen, ROS, Redox Signalling and the activity of SOD best explains the mechanism behind the healing success of Intranasal Light Therapy. The key to the efficacy of the intranasal pathway is that it is essentially an in vivo method without the invasiveness of the older intravenous method.

The rich vascular bed in the nasal cavity is an excellent starting point to carry and distribute Redox Signalling molecules throughout the body to stimulate the healing process.

### Peripheral blood circulation



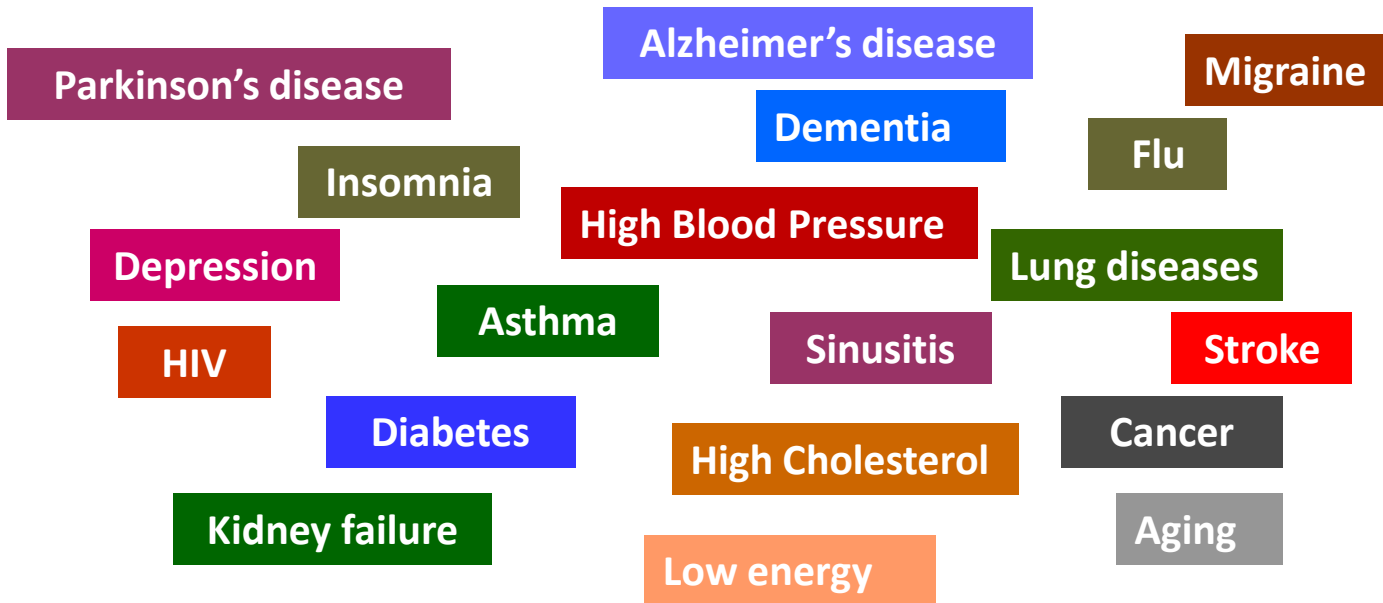
Before



After



# Clinical Evidence for...



**and more....**

# Summary Differences Between Three Models



	633 Red / Qi-Light	RadiantLife LT / 655 Prime	810 Infrared
Price	\$299	\$399	\$499
Light source	LED	Low level laser	LED
Wavelength	633 nm	655 nm	810 nm
Color	Red	Deep red	Invisible
Pulse mode	Continuous	Continuous	10 Hz
Battery life	2 months	3 months	2.5 months
Safety issues	None	Very small	None
Research studies	Few	Many	Few



**You can also run a truck  
over it!**

**B-CURE LASER** allows treating pain at home and saves visits to the physician.



Almost everyone begins treatment skeptical, but all end up with a smile!

The B-CURE LASER is a soft laser meant for professional treatment of orthopedic problems, sport injuries, inflammation, joint problems, diabetic sores, pressure sores and even veterinary treatments.

Using it for six to eight minutes each day generally helps reduce the amount of chemical medications needed, saves time, and does the work of several devices in one.

*“People can perform the treatment as often as needed, can treat themselves, and after we instruct them on exactly what to do, and what they are expected to feel, they are independent. I began using it to treat patients, and for some it was like a miracle, it changed their lives.”* ~ Dr. Hagai Amir, director of the Orthopedic Rehabilitation Department at Sheba Tel Hashomer Hospital, Israel.

## More B-Cure Laser TESTIMONIALS – doctors and patients

The gymnasts daily use of B-Cure Laser LLLT 808 device substantially decreased the pain without the use of pain killers. Decreasing the pain also enabled greater maintenance of flexibility and increased level of concentration in the exercises. I thank you on behalf of the girls on the team and recommend the use of B-Cure Laser wholeheartedly.

Sincerely,

Ira Vigdorichik

Coach of the Israeli Women's Rhythmic  
Gymnastics Team

Beijing 2008 Olympic Games



My name is Michael Zilber and I suffer from joint aches, as well as gum and teeth ache. After a treatment of about **three months** using the B-Cure Laser device, with plenty of patience, the pain in the arm wrists that lasted several years decreased by 80%-90%. Amazing!! In addition, the **teeth and gum aches disappeared after two treatments only** with the device and the healing time of a burn I suffered from shortened significantly after using the device. In conclusion: **this is a very simple, domestic device that works wonderfully.**

Thank you, Michael

View more testimonials here: [http://www.gd-energies.com/index.php?page\\_id=90](http://www.gd-energies.com/index.php?page_id=90)

## TQ Solo Portable

TQ Solo is FDA cleared pain-relieving battery operating device. This compact portable device gives you the power to temporarily relieve both chronic and acute pain.

The TQ Solo is the only handheld portable device with exclusive Multi Radiance Technology™. Multi Radiance Technology™ utilizes 4 proven radiances: a **super pulsed laser**, **infrared light**, **red light**, and a **static magnetic field**.

Administering effective light is simple with three preset frequencies and an easy to use pain-relieving guide. Talk to your doctor today to learn more about TQ Solo. You now have portable pain relief. TQ Solo is compact and lightweight. The rechargeable lithium battery lasts up to 18 hours so pain relief is always there, when you need it!

### TQ Solo is easy as 1 2 3

- 1 Locate your treatment area indicated in the pain-relieving guide.
- 2 Turn on TQ Solo and select the frequency recommended by the pain-relieving guide.
- 3 Press the start button and press TQ Solo over the treatment area, as illustrated by the pain-relieving guide.



Pain Relief That  
Travels With You!

#### TQ Solo

##### Specifications

Laser Peak Power	15W (15,000mW)
Infrared LED's	60mW
Red LED's	7.5mW

##### Wavelength

Laser	905 nm
Infrared	875 nm
Red	660 nm

## **Efficacy of Low Level Laser Therapy on Wound Healing in Patients with Chronic Diabetic Foot Ulcers— A Randomised Control Trial**

Basavaraj M. Kajagar, Ashok S. Godhi, Archit Pandit, S. Khatri



### **Abstract**

**Foot ulcers are serious complications of Diabetes Mellitus (DM) and are known to be resistant to conventional treatment. They may herald severe complications if not treated wisely. Electromagnetic radiations in the form of photons are delivered to the ulcers in laser form to stimulate healing. This study was conducted to evaluate the efficacy of Low Level Laser Therapy (LLLT) in diabetic ulcer healing dynamics. Patients in study group received LLLT with conventional therapy and those in control group were treated with conventional therapy alone.**

**Healing or percentage reduction in ulcer area over a period of 15 days after commencement of treatment was recorded. Initial ulcer area was 2608.03 mm<sup>2</sup> in study group and 2747.17 mm<sup>2</sup> in control group ( $p = 0.361$ ). Final ulcer area was 1564.79 mm<sup>2</sup> in study group and 2424.75 mm<sup>2</sup> in control group ( $p = 0.361$ ). Percentage ulcer area reduction was  $40.24 \pm 6.30$  mm<sup>2</sup> in study group and  $11.87 \pm 4.28$  mm<sup>2</sup> in control group ( $p < 0.001$ ,  $Z = 7.08$ ). Low Level Laser Therapy is beneficial as an adjunct to conventional therapy in the treatment of diabetic foot ulcers (DFU).**



## **CASE REPORT: Chronic Diabetic Foot Ulcerations**

In the pictures below you can see the diabetic foot of an 82-year-old woman, who went to hospital for an amputation.

There it was decided first to try soft laser treatment, which, as can be seen, was successful.

The treatment proved to be clinically successful after just a few days, so the amputation would not be necessary.



**The final state of the foot can be seen in this fourth picture at left, which was taken after five weeks of treatment with soft laser.**



ERCHONIA®

Laser Healthcare™



## 3LT® Low Level Laser Therapy

### Neck and Shoulder Pain

A variety of low level lasers are proven to be effective in reducing and eliminating acute and chronic pain in the neck & shoulders. Many patients find that this solution is a much more effective and immediate alternative to traditional pain medications.

### Body Contouring

Erchonia lasers are proven to target and eliminate fat in areas that are difficult to target with regular diet and exercise. The Zerona laser is proven to target these difficult areas and biostimulate the body on the cellular level.

### Acne

Currently, there are many acne treatments available in the form of pills, lotions, tonics, chemicals, and more, but Erchonia has developed a new solution with DERMALASER. This FDA market cleared laser targets the actual type of bacteria that is responsible for causing acne, rather than targeting the skin.

## Low-Level Laser Therapy as a Non-Invasive Approach for Body Contouring: A Randomized, Controlled Study

Robert F. Jackson, MD,<sup>1†</sup> Doug D. Dedo, MD,<sup>2†</sup> Greg C. Roche, MD,<sup>3†</sup> David I. Turok,<sup>4†</sup> and Ryan J. Maloney, BS<sup>5\*</sup>

<sup>1</sup>River View Surgery Center, Marion, Indiana 46952

<sup>2</sup>Garden Cosmetic Center, West Palm Beach, Florida 33406

<sup>3</sup>Bloomfield Laser and Cosmetic Surgery Center, Bloomfield, Hills, Michigan 48032

<sup>4</sup>Fox River Surgery Center, Fox River Grove, Illinois, 60021

<sup>5</sup>Erchonia Medical Inc., McKinney, Texas 75069

**Background and Objective:** Transmission electron microscopic images have demonstrated the formation of transitory pores in adipocyte cell membranes followed by the collapse of adipose cells subsequent to laser irradiation of 635 nm. The objective is to evaluate the application of a 635 nm and 17.5 mW exit power per multiple diode laser for the application of non-invasive body contouring of the waist, hips, and thighs.

**Study Design/Patients and Methods:** Double-blind, randomized, placebo-controlled trial of a 2-week non-invasive laser treatment conducted from May 2007 to June 2008 across multiple-private practice sites in the United States of America. Sixty-seven volunteers between the ages of 18–65 with a body mass index (BMI) between 25 and 30 kg/m<sup>2</sup> and who satisfied the set inclusion criteria participated. Eight of the 67 subjects did not have circumference measurements recorded at the 2-week post-procedure measurement point. Participants were randomly assigned to receive low-level laser treatments or a matching sham treatment three times per week for 2 weeks. Reduction in the total combined inches of circumference measurements of the waist, hip and bilateral thighs from baseline to the completion of the 2-week procedure administration phase was assessed.

**Results:** Participants in the treatment group demonstrated an overall reduction in total circumference across all three sites of –3.5 in. ( $P < 0.001$ ) compared with control subjects who revealed a –0.684 reduction ( $P < 0.071745$ ). Test group participants demonstrated a reduction of –0.98 in. ( $P < 0.0001$ ) across the waist, –1.05 in. ( $P < 0.01$ ) across the hip, and –0.85 in. ( $P < 0.01$ ) and –0.65 in. ( $P < 0.01$ ) across the right and left thighs from baseline to 2 weeks (end of treatment). At 2 weeks post-procedure, test group subjects demonstrated a gain of 0.31 total inches collectively across all three sites.

**Conclusion:** These data suggest that low-level laser therapy can reduce overall circumference measurements of specifically treated regions. *Lasers Surg. Med.* 41:799–809, 2009. © 2009 Wiley-Liss, Inc.

**Key words:** adipocyte; adipose panicle; emulsification; photobiomodulation; transitory pore

### INTRODUCTION

The emergence of non-invasive modalities targeting subcutaneous fat to achieve a slimming effect continues to gain interest amongst physicians and patients. Numerous delivery mechanisms have been developed to achieve adipocyte destruction including, ultrasound, infrared, and radio frequency [1–5]. The external application of photonic energy at high intensities can generate significant adverse events if not properly utilized; therefore, all parameters must be properly explored in order to identify which delivery mechanism yields the most desirable results while minimizing adverse events.

In recent years, there has been an upsurge in the application of low-level laser therapy (LLLT) across myriad neurologic, dental, ophthalmic, dermatologic disorders, and injuries [6–10]. LLLT has been proven to be a safe and effective therapeutic option in clinical and histological trials; yet, a great deal of skepticism still remains regarding the efficacy of this modality at the clinical level.

Numerous studies have exhibited laser therapy's ability to induce an assortment of cellular reactions in non-photosynthetic cells. Laser therapy has been shown to preserve the membrane and genetic material of cells that are nutritionally starved [11]; regenerate erythrocytes enhancing their oxygenic function [12]; enhance fertilization potential of spermatozoa [13]; stimulate the differentiation of satellite stem cells [14–16]; reduce the extent of myocardial infarctions and ischemic strokes [17]; and improve wound healing and modulate chronic inflammation [18]. A continually growing body of evidence suggests that laser therapy can alter cell bioenergetics, consequentially influencing the functional biochemical properties intracellularly, culminating in an observable diverse clinical effect.

<sup>†</sup>Private Practice Physician.

\*Correspondence to: Ryan J. Maloney, BS, Medical Director, McKinney, TX 75069; 1172 E. Buffalo St., Gilbert, AZ 85296.

E-mail: ryanm@erchonia.com

Accepted 11 September 2009

Published online 16 December 2009 in Wiley InterScience

(www.interscience.wiley.com).

DOI 10.1002/lsm.20265

The emergence of non-invasive modalities targeting subcutaneous fat to achieve a slimming effect continues to gain interest amongst physicians and patients.

Numerous delivery mechanisms have been developed to achieve adipocyte destruction including, ultrasound, infrared, and radio frequency.

A continually growing body of evidence suggests that laser therapy can alter cell bioenergetics, consequentially influencing the functional biochemical properties intracellularly, culminating in an observable diverse clinical effect.

# Results achieved WITHOUT surgery using Energy Medicine Device ONLY



Before



After 6 treatments



Result after  
12 Treatments

# Detoxification is a LIFETIME challenge

**LEAD in bones requires years of continuous oral chelation with EDTA and/or Zeolite.**

**Because bones take an average of 15 years to fully regenerate, IV EDTA chelation therapy over several months only removes lead and other toxic metals from the body's blood and tissues, NOT from bones.**

**Harvard studies prove that bone lead leads to heart disease and cataracts, as Bones are the MAJOR storehouse of lead in the body.**

**For more information see the  
507 References Supporting Oral EDTA**

**On the Gordon Research Institute Website at**

**[www.gordonresearch.com](http://www.gordonresearch.com)**

Academy  
**ACIM**



The bridge between hope and healing

# Join ACIM!

## The Academy of Comprehensive Integrative Medicine

ACIM is a web-based institution focused on education through online curriculum, webinars and live conferences – striving to advance the thinking of health, wellness, and the diagnosis and treatment of disease from a patient perspective



Dr. Lee Cowden & Dr. Damon Miller



Dr. Bob Clendenn



"WOW" - Dr. Garry Gordon  
Pulse 4 Life

Live National



Awesome - Dr. Leigh Erin Connealy

Conferences



"I'm so glad I'm a part of this."  
Dr. Stephen Sinatra  
Lifetime Achievement Award  
Winner



Dr. Tim Guilford & John Guilford  
Your Energy Systems



Dr. Jorge Flechas

New Exciting Webinars from ACIM

The Newest Concepts on Winning the Fight Against Cancer

Excerpts from the October 2012 ACIM Conference *Cancer Answers*

with Garry Gordon, MD, DO, MD(H) & W. Lee Cowden, MD, MD(H)

[Click to view](#)

ACIM Cancer Answers Conference  
Orlando, Florida – Oct 2012

The Expanded Warburg Effect

with Garry Gordon, MD, DO, MD(H)

[Click to view](#)

**Stay tuned for our next webinar on**  
**“TINY BUBBLES: Hydrogen & Energy”**

**Tuesday, March 19<sup>th</sup> - 3:00 PM (MST)**

**Hydrogen plays a critical role in achieving and maintaining positive health. We need this element, which makes up 90 percent of matter in our universe, as much as we need oxygen.**

**Albert Szent-Gyorgyi, the Nobel Prize-winning scientist who discovered vitamin C, believes that hydrogen, not oxygen, is the “fuel of life.” Oxygen burns hydrogen, which releases the energy that runs our bodies.**

**Hydrogen, specifically the negative hydrogen ion (H-) is considered the most powerful antioxidant. By replenishing our hydrogen stores, we increase cellular energy and detoxification, relieving and even reversing common degenerative diseases like Alzheimer’s and Parkinson’s, heart disease, chronic fatigue, fibromyalgia, depression, thyroid and hormone imbalances, Type 2 diabetes, acid reflux and indigestion.**



Gordon Research Institute

STAY CONNECTED



Search



HOME

FIND A PHYSICIAN

F.A.C.T.

HEALTH TOPICS

PROTOCOLS

MEDIA

DR. GORDON

LINKS

CONTACT US

Home / Media / Audio

## AUDIO

FONT SIZE: (-)(+)

Gordon Research Audio Files

[Dr. Gordon's Laser Question and Answer Conference Call on 2/27/13](#)

[In Short Order - Interview with Dr. Garry Gordon  
with Sue Vogan on In Short Order, 11/27/11](#)

To listen to  
**Dr. Gordon's Laser Q & A Conference Call  
on 2/27/13**

Go to [gordonresearch.com/audio](http://gordonresearch.com/audio).



**FACT Membership is FREE** to any Qualified Health professional desiring to achieve **OPTIMAL WELLNESS** for themselves and their clients. This includes Nurses, Nutritionists, Scientists, Researchers, and others on a case by case basis.



# Gordon Research Institute

STAY CONNECTED



Search



HOME FIND A PHYSICIAN F.A.C.T. HEALTH TOPICS PROTOCOLS MEDIA DR. GORDON LINKS CONTACT US

Power Drink  
F.I.G.H.T.  
F.A.C.T.  
PEMF  
What's Hot



## Where Is Dr. Gordon?

March 2013

S	M	T	W	T	F	S
					1	2
3	4	5	6	7	8	9
10	11	12	13	14	15	16
17	18	19	20	21	22	23
24	25	26	27	28	29	30
31						

Join Dr. Gordon's  
**ENERGY**  
Medicine  
Webinars

Next Energy Medicine Webinar on 3/4/2013

Join Dr. Gordon on Monday, 3/4/13 at 3 pm AZ time. "Energy Medicine, Lasers and Degenerative Disease." Click photo.



Wrap search phrase in double quotes for results with exact matches of the phrase.



## Anti-Aging



### [Anti-aging Research](#)

28 Topics

January 21, 2013

Posted By: moderator



### [Bones](#)

86 Topics

January 21, 2013

Posted By: moderator



### [Calcification](#)

January 21, 2013



Wrap search phrase in double quotes for results with exact matches of the phrase.



Newest ▾ 50 ▾ Change

Previous 1 [2](#) [3](#) [4](#) [5](#) Next



### [Alternative metabolic cancer therapies](#)

1 Post

February 19, 2013

Posted By: moderator



### [Caelix liposomal doxunudian iv chemo??](#)

1 Post

February 13, 2013

Posted By: moderator



### [Alternative Therapies' interview with Dr Nick Gonzales](#)

2 Posts

February 5, 2013

Posted By: moderator



### [Tumor Cells Engineer Acidity to Drive Cell Invasion](#)

2 Posts

February 4, 2013

Posted By: moderator

**Browse topics  
alphabetically  
by category,  
or use keyword  
search**

# Health Consultations

Get a personalized health consultation! Dr. Garry Gordon offers his 53+ years of advanced medical experience to you via telephone, or in-person, for \$300 per hour.

Appointments may include a review of all prior medical records and/or any new tests that can be ordered in preparation for your personalized consultation. Test panels can be more focused on ANTI-AGING, or cancer, depending on your concerns.

Since Dr. Gordon does not accept insurance, he has made arrangements for cash paying patients to obtain substantial discounts of 70% or more for any blood tests that he orders. In Addition, Dr. Gordon now offers the most advanced and comprehensive 72 gene test panel available anywhere for \$425.

For more information please contact Gordon Research Institute  
Ph 928-472-4263 x134, Fax 928-474-3819,  
or email [info@gordonresearch.com](mailto:info@gordonresearch.com)

***THANK YOU***



***Garry F. Gordon MD, DO, MD(H)***